

# DARWIN SEVEN DEPARTURE

D-ATIS DEP 120.8  
 CLNC DEL 133.2  
 CPDLC  
 MINNEAPOLIS TOWER  
 123.95 273.55 (12L-30R)  
 126.7 273.55 (12R-30L 4-22)  
 123.675 273.55 (17-35)  
 MINNEAPOLIS DEP CON  
 SOUTH/EAST 124.7 335.65  
 NORTH/WEST 125.75 335.65

NC-1, 23 MAY 2019 to 20 JUN 2019

**TOP ALTITUDE:  
 (JETS) 7000/ (PROPS) 5000**

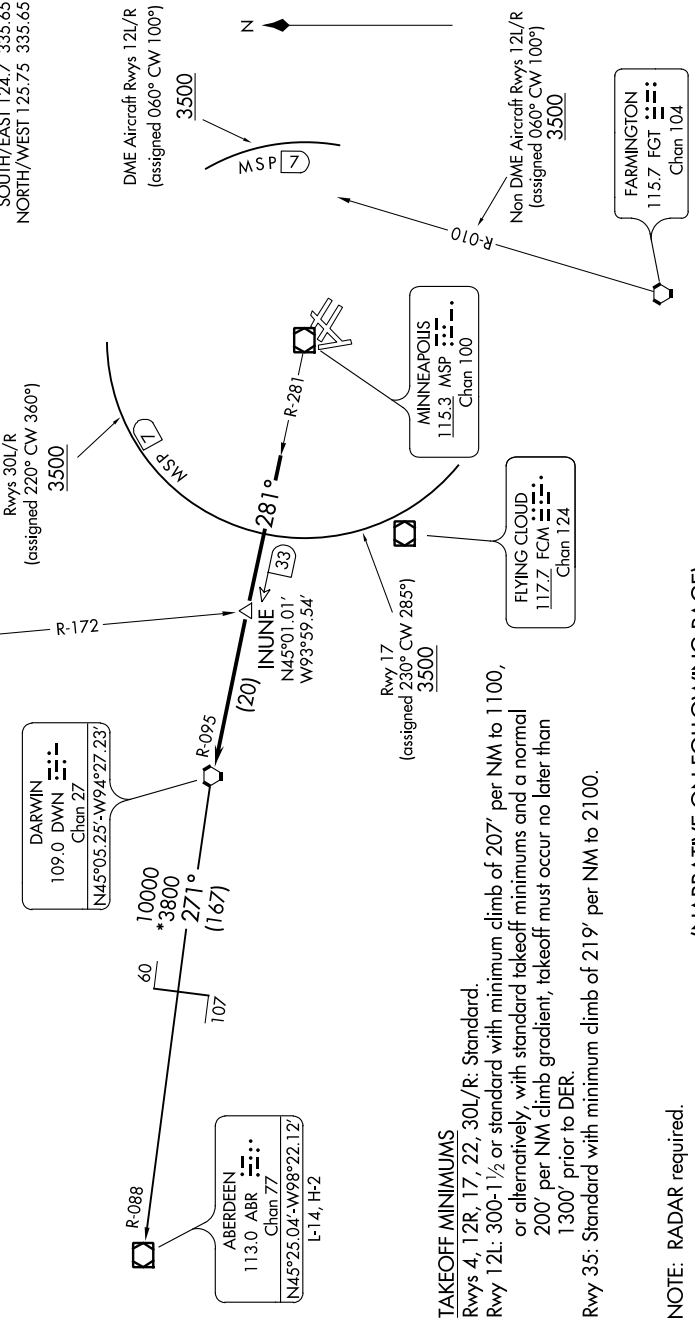
**DARWIN**  
 109.0 DWN  
 Chan 27  
 N45°05.25'-W94°27.23'

**ABERDEEN**  
 113.0 ABR  
 Chan 77  
 N45°25.04'-W98°22.12'  
 L-14, H-2

**ST. CLOUD**  
 112.1 STC  
 Chan 58

**FLYING CLOUD**  
 117.7 FCM  
 Chan 124

**FARMINGTON**  
 115.7 FGT  
 Chan 104



**TAKEOFF MINIMUMS**  
 Rwy 4, 12R, 17, 22, 30L/R: Standard.  
 Rwy 12L: 300-1½ or standard with minimum climb of 207' per NM to 1100,  
 or alternatively, with standard takeoff minimums and a normal  
 200' per NM climb gradient, takeoff must occur no later than  
 1300' prior to DER.  
 Rwy 35: Standard with minimum climb of 219' per NM to 2100.

NOTE: RADAR required.  
 NOTE: Chart not to scale.

(NARRATIVE ON FOLLOWING PAGE)

# DARWIN SEVEN DEPARTURE

NC-1, 23 MAY 2019 to 20 JUN 2019