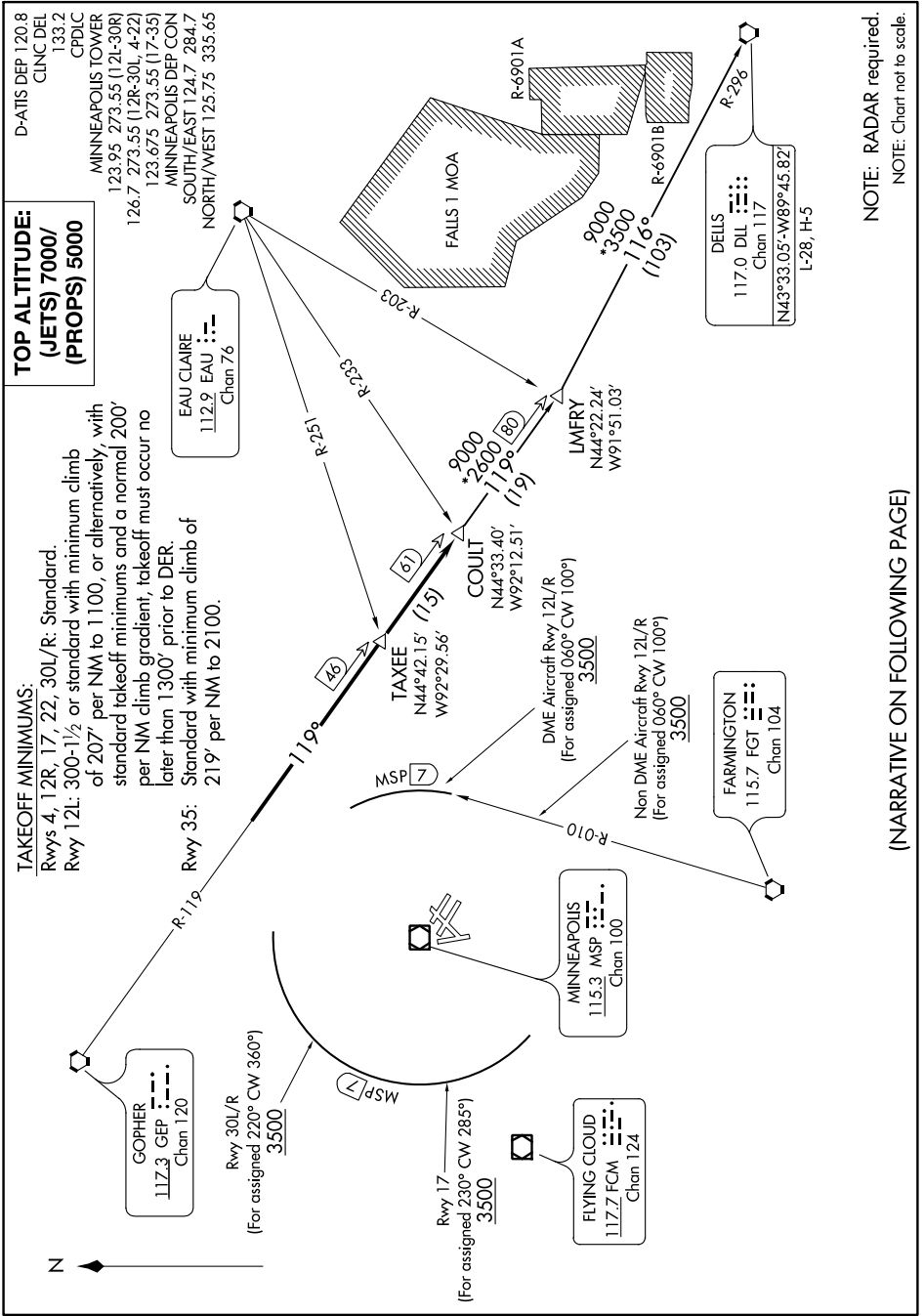


COULT SEVEN DEPARTURE



TOP ALTITUDE:
(JETS) 7000/
(PROPS) 5000

TAKEOFF MINIMUMS:
Rwys 4, 12R, 17, 22, 30L/R: Standard.
Rwy 12L: 300-1½ or standard with minimum climb of 207' per NM to 1100, or alternatively, with standard takeoff minimums and a normal 200' per NM climb gradient, takeoff must occur no later than 1300' prior to DER.
Rwy 35: Standard with minimum climb of 219' per NM to 2100.

NC-1, 23 MAY 2019 to 20 JUN 2019

(NARRATIVE ON FOLLOWING PAGE)

NC-1, 23 MAY 2019 to 20 JUN 2019