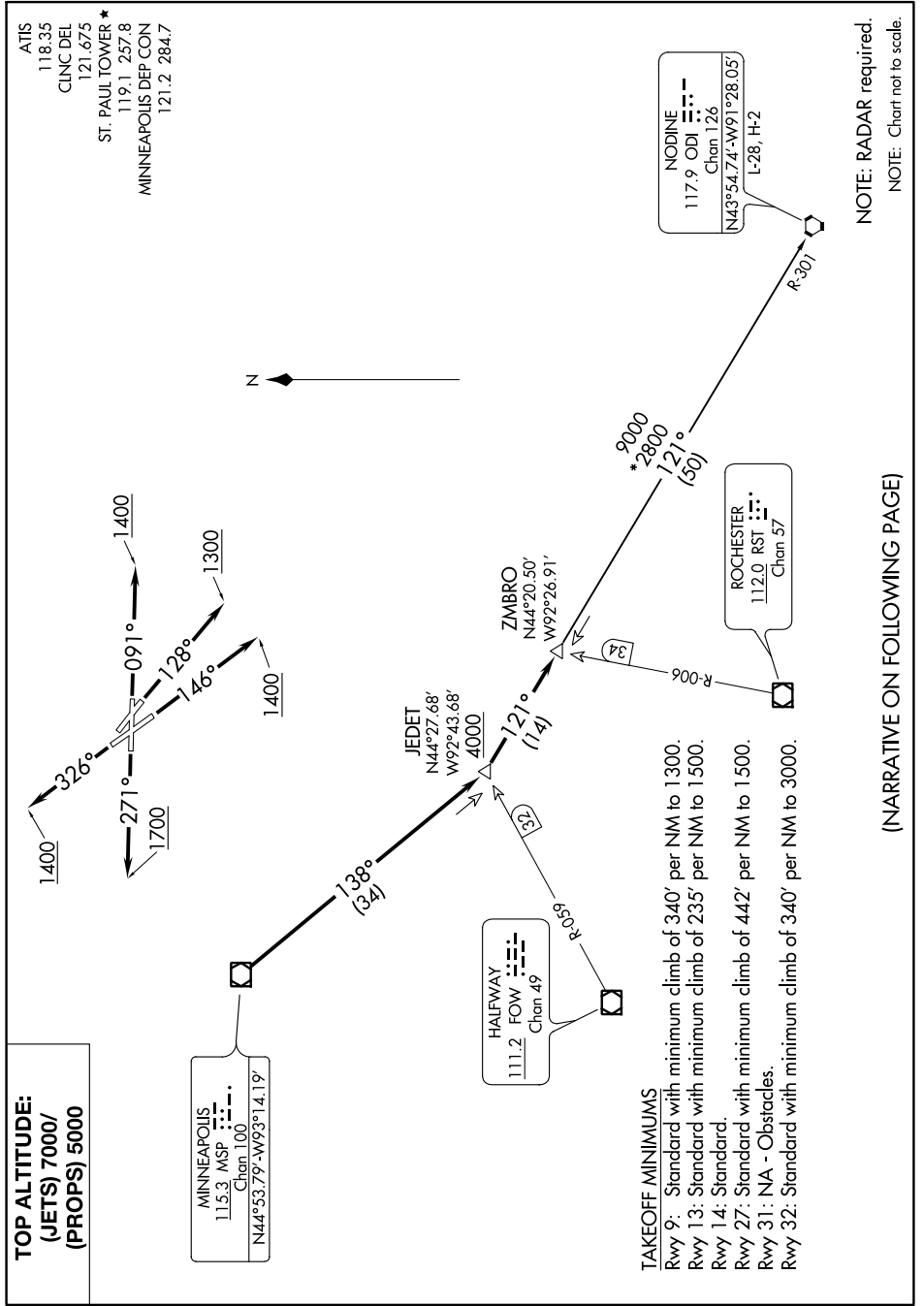


NC-1, 23 MAY 2019 to 20 JUN 2019



**TOP ALTITUDE:**  
 (JETS) 7000/  
 (PROPS) 5000

MINNEAPOLIS  
 115.3 MSP  
 Chan 106  
 N44°53.79'-W93°14.19'

HALFWAY  
 111.2 FOW  
 Chan 49

**TAKEOFF MINIMUMS**  
 Rwy 9: Standard with minimum climb of 340' per NM to 1300.  
 Rwy 13: Standard with minimum climb of 235' per NM to 1500.  
 Rwy 14: Standard.  
 Rwy 27: Standard with minimum climb of 442' per NM to 1500.  
 Rwy 31: NA - Obstacles.  
 Rwy 32: Standard with minimum climb of 340' per NM to 3000.

NODINE  
 117.9 ODI  
 Chan 126  
 N43°54.74'-W91°28.05'

ROCHESTER  
 112.0 RST  
 Chan 57

**NOTE: RADAR required.**  
 NOTE: Chart not to scale.

(NARRATIVE ON FOLLOWING PAGE)

NC-1, 23 MAY 2019 to 20 JUN 2019