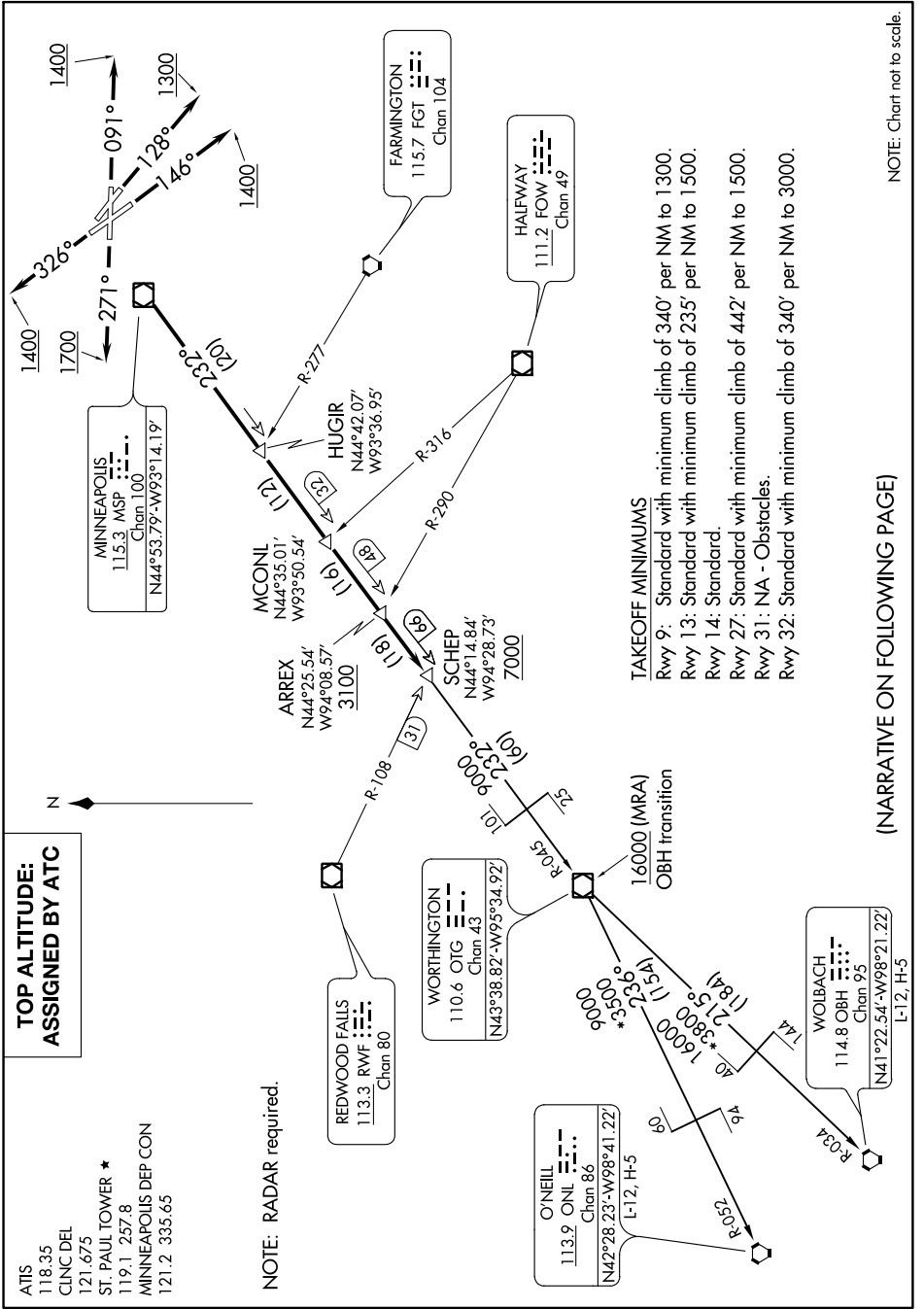


NC-1, 23 MAY 2019 to 20 JUN 2019



NOTE: Chart not to scale.

TAKEOFF MINIMUMS

Rwy 9: Standard with minimum climb of 340' per NM to 1300.
 Rwy 13: Standard with minimum climb of 235' per NM to 1500.
 Rwy 14: Standard.
 Rwy 27: Standard with minimum climb of 442' per NM to 1500.
 Rwy 31: NA - Obstacles.
 Rwy 32: Standard with minimum climb of 340' per NM to 3000.

(NARRATIVE ON FOLLOWING PAGE)