

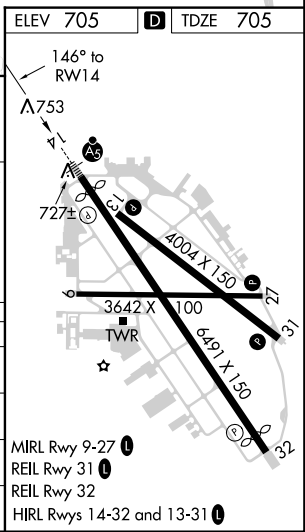
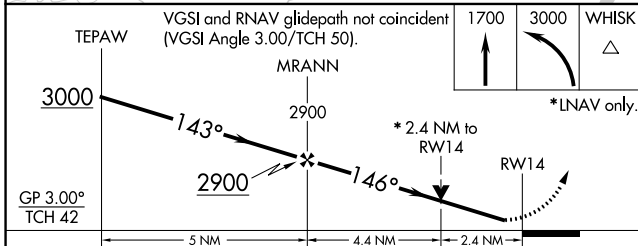
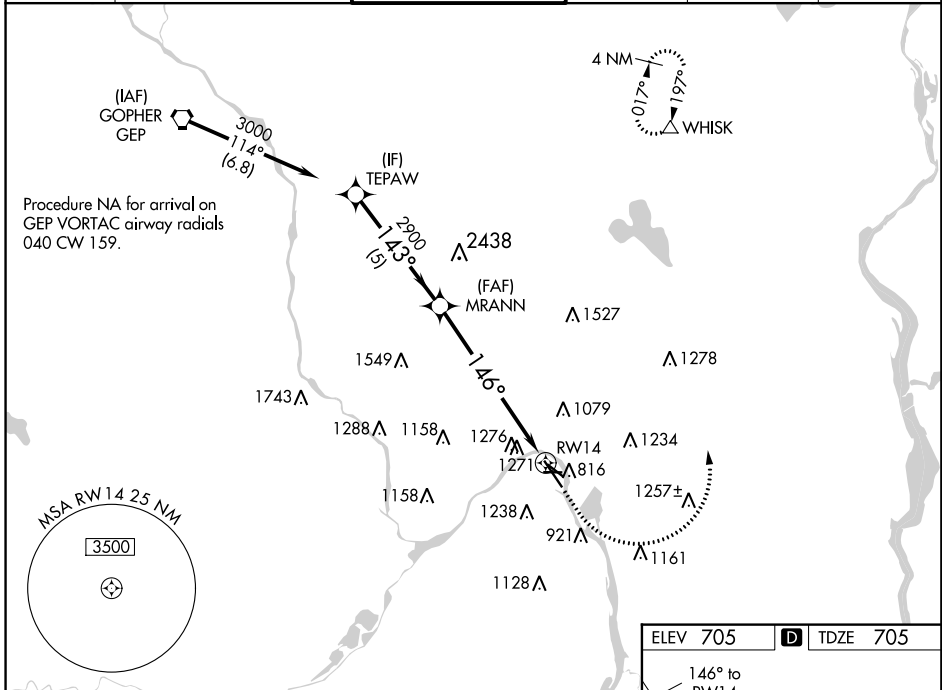
WAAS CH 62828 W14A	APP CRS 146°	Rwy Idg TDZE Apt Elev	6148 705 705
--	------------------------	-----------------------------	---

RNAV (GPS) RWY 14

ST PAUL DOWNTOWN HOLMAN FIELD (STP)

<p>For uncompensated Baro-VNAV systems, LNAV/VNAV NA below -21°C (-5°F) or above 54°C (130°F). Rwy 14 helicopter visibility reduction below ¾ SM NA. DME/DME RNP-0.3 NA. For inop MALSR, increase LNAV Cats C and D to 2½ SM.</p>	<p>MALSR</p>	<p>MISSED APPROACH: (Do not exceed 250K until WHISK) Climb to 1700 then climbing left turn to 3000 direct WHISK and hold.</p>

ATIS 118.35	MINNEAPOLIS APP CON 121.2 335.65	ST. PAUL TOWER ★ 119.1 (CTAF) 0 257.8	GND CON 121.675	CLNC DEL 121.675	UNICOM 122.95
-----------------------	--	--	---------------------------	----------------------------	-------------------------



ELEV 705	D TDZE 705			
TEPAW	MRANN	RWY 14		
3000	2900	1700		
GP 3.00°	TCH 42			
5 NM	4.4 NM	2.4 NM		
CATEGORY	A	B	C	D
LPV DA	955/40		250 (300-¾)	
LNAV/VNAV DA	1511-2½		806 (900-2½)	
LNAV MDA	1520/40 815 (900-¾)		1520-1⅞ 815 (900-1⅞)	
C CIRCLING	1580-1¼ 875 (900-1¼)		1580-2½ 875 (900-2½)	