

KBREW ONE DEPARTURE
(KBREW1.KBREW) 01FEB18

ST. PAUL, MINNESOTA
ST PAUL DOWNTOWN HOLMAN FIELD (STP)
AL-263 (FAA)

NC-1, 23 MAY 2019 to 20 JUN 2019

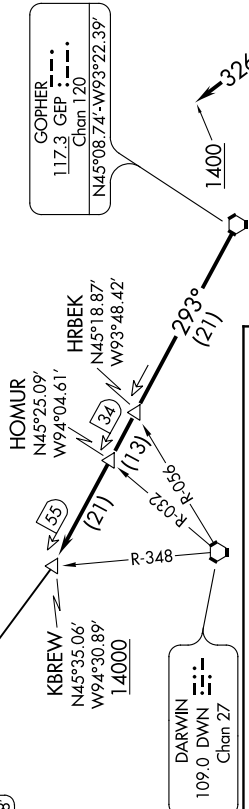
**TOP ALTITUDE:
ASSIGNED BY ATC**

FARGO
116.2 FAR
Chan 109
N46°45.20'-W96°51.08'
L-14, H-2

TAKEOFF MINIMUMS

- Rwy 9: Standard with minimum climb of 340' per NM to 1300.
- Rwy 13: Standard with minimum climb of 235' per NM to 1500.
- Rwy 14: Standard.
- Rwy 27: 600-2 or standard with minimum climb of 442' per NM to 1500.
- Rwy 31: NA - Obstacles.
- Rwy 32: Standard with minimum climb of 340' per NM to 3000.

ATIS
118.35
CINC DEL
121.675
ST. PAUL TOWER*
119.1 257.8
MINNEAPOLIS DEP CON
121.2 335.65



DEPARTURE ROUTE DESCRIPTION

TAKEOFF RUNWAY 9: Climb heading 091° to 1400 for RADAR vectors to GEP VORTAC then on GEP R-293 to KBREW INT/GEP 55 DME, thence. . . .

TAKEOFF RUNWAY 13: Climb heading 128° to 1300 for RADAR vectors to GEP VORTAC then on GEP R-293 to KBREW INT/GEP 55 DME, thence. . . .

TAKEOFF RUNWAY 14: Climb heading 146° to 1400 for RADAR vectors to GEP VORTAC then on GEP R-293 to KBREW INT/GEP 55 DME, thence. . . .

TAKEOFF RUNWAY 27: Climb heading 271° to 1700 for RADAR vectors to GEP VORTAC then on GEP R-293 to KBREW INT/GEP 55 DME, thence. . . .

TAKEOFF RUNWAY 32: Climb heading 326° to 1400 for RADAR vectors to GEP VORTAC then on GEP R-293 to KBREW INT/GEP 55 DME, thence. . . .

. . . on transition or assigned route. Expect clearance to filed altitude/flight level 10 (ten) minutes after departure.

FARGO TRANSITION (KBREW1.FAR): From over KBREW on FAR R-116 to FAR VOR/DME.

NOTE: RADAR required.
NOTE: Chart not to scale.

KBREW ONE DEPARTURE
(KBREW1.KBREW) 01FEB18

ST. PAUL, MINNESOTA
ST PAUL DOWNTOWN HOLMAN FIELD (STP)

NC-1, 23 MAY 2019 to 20 JUN 2019