

LOC/DME I-BAO 111.5 Chan 52	APP CRS 326°	Rwy Idg TDZE Apt Elev	6109 704 705
--	------------------------	-----------------------------	---

ILS or LOC RWY 32

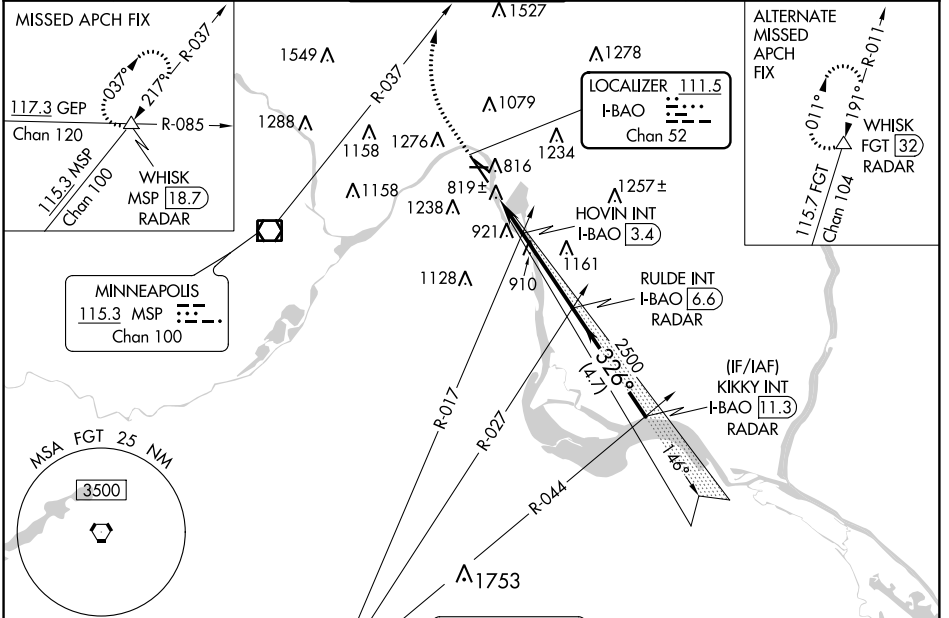
ST PAUL DOWNTOWN HOLMAN FIELD (STP)

DME or RADAR required. RADAR required for procedure entry.

MISSED APPROACH: Climb to 1300 then climbing right turn to 4000 on heading 010° and MSP R-037 to WHISK INT/MSP 18.7 DME/RADAR and hold.

⚠ Rwy 32 helicopter visibility reduction below RVR 4000 NA. Inoperative table does not apply to S-ILS 32 all Cats and S-LOC all Cats. HOVIN FIX MINIMUMS: Inoperative table does not apply to Cats A/B. For inoperative ALS, increase Cats C/D visibility to 1 1/2 SM.

ATIS 118.35	MINNEAPOLIS APP CON 121.2 335.65	ST. PAUL TOWER * 119.1 (CTAF) 0 257.8	GND CON 121.675	CLNC DEL 121.675	UNICOM 122.95
-----------------------	--	---	---------------------------	----------------------------	-------------------------



ELEV 705	D	TDZE 704			
<p>MIRL Rwy 9-27</p> <p>REIL Rwy 31 326° 5.5 NM from FAF</p> <p>REIL Rwy 32</p> <p>HIRL Rwys 14-32 and 13-31</p> <p>FAF to MAP 5.5 NM</p>					
Knots	60	90	120	150	180
Min:Sec	5:30	3:40	2:45	2:12	1:50

1300	4000	MSP R-037	WHISK	RULDE INT I-BAO 6.6 RADAR	KIKKY INT I-BAO 11.3 RADAR
<p>*LOC only</p> <p>I-BAO 1.1</p> <p>*I-BAO 2.6</p> <p>HOVIN INT I-BAO 3.4</p> <p>2500</p> <p>326°</p> <p>2500</p> <p>GS 3.00° TCH 40</p>					
<p>1.5 NM</p> <p>0.8 NM</p> <p>3.2 NM</p> <p>4.7 NM</p>					
CATEGORY	A B C D				
S-ILS 32	1011/50 307 (400-1)				
S-LOC 32	1460/55 756 (800-1)	1460/60 756 (800-1 1/4)	1460-2	756 (800-2)	
CIRCLING	1580-1 1/4	875 (900-1 1/4)	1580-2 1/2 875 (900-2 1/2)	1580-2 3/4 875 (900-2 3/4)	
HOVIN FIX MINIMUMS					
S-LOC 32	1220/55	516 (600-1)	1220-1 1/4	516 (600-1 1/4)	
CIRCLING	1580-1 1/4	875 (900-1 1/4)	1580-2 1/2 875 (900-2 1/2)	1580-2 3/4 875 (900-2 3/4)	

NC-1, 23 MAY 2019 to 20 JUN 2019

NC-1, 23 MAY 2019 to 20 JUN 2019