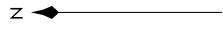
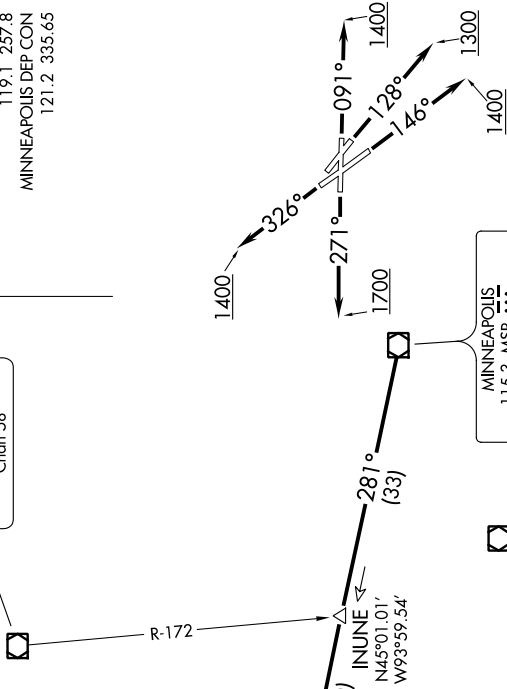


# DARWIN SEVEN DEPARTURE

ATIS  
118.35  
CINC DEL  
121.675  
ST. PAUL TOWER\*  
119.1 257.8  
MINNEAPOLIS DEP CON  
121.2 335.65



ST. CLOUD  
112.1 STC  
Chan 38



**TAKEOFF MINIMUMS**  
 Rwy 9: Standard with minimum climb of 340' per NM to 1300.  
 Rwy 13: Standard with minimum climb of 235' per NM to 1500.  
 Rwy 14: Standard.  
 Rwy 27: 600-2 or standard with minimum climb of 442' per NM to 1500.  
 Rwy 31: NA-obstacles.  
 Rwy 32: Standard with minimum climb of 340' per NM to 3000.

**NOTE: RADAR required.**  
 NOTE: Chart not to scale.

(NARRATIVE ON FOLLOWING PAGE)