

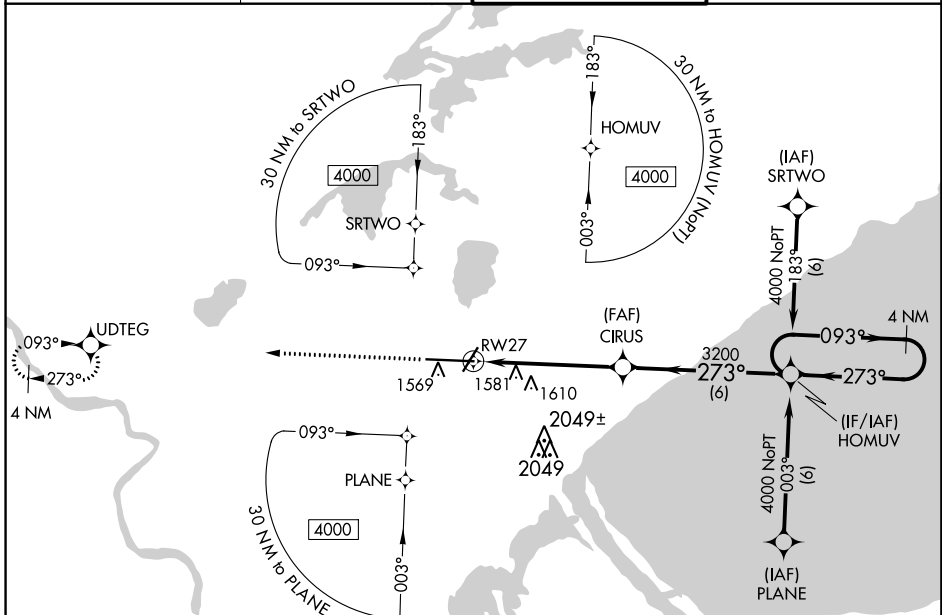
WAAS CH <b>50502</b> <b>W27A</b>	APP CRS <b>273°</b>	Rwy Idg <b>10162</b> TDZE <b>1421</b> Apt Elev <b>1428</b>
--	------------------------	--

# RNAV (GPS) RWY 27

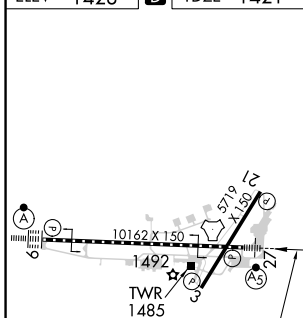
DULUTH INTL (DLH)

<p><b>⚠</b> For uncompensated Baro-VNAV systems, LNAV/VNAV NA below -17°C (2°F) or above 46°C (115°F). DME/DME RNP-0.3 NA. For Inop ALS, increase LPV Cat E visibility to RVR 4000, LNAV/VNAV Cat E visibility to RVR 6000 and LNAV Cat E visibility to 1 3/4 SM. Circling NA for Cat E southeast of Rwy 3/27.</p>	<p>MALSR</p>	<p>MISSED APPROACH: Climb to 3300 direct UDTEG and hold.</p>
	<p>ASR</p>	

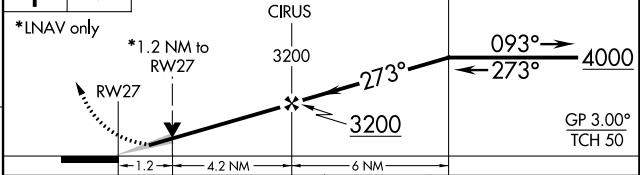
ATIS <b>124.1 270.1</b>	DULUTH APP CON <b>125.45 233.7</b>	DULUTH TOWER <b>118.3 257.8</b>	GND CON <b>121.9 348.6</b>
----------------------------	---------------------------------------	------------------------------------	-------------------------------



ELEV 1428	<b>D</b>	TDZE 1421
-----------	----------	-----------



<p>3300 UDTEG</p>	<p>VGSI and RNAV glidepath not coincident (VGSI Angle 3.00/TCH 96).</p>	<p>HOMUV 4 NM Holding Pattern</p>
-------------------	---	-----------------------------------



CATEGORY	A	B	C	D	E
LPV DA	1671/24 250 (300-1/2)				
LNAV/VNAV DA	1746/40 325 (400-3/4)				
LNAV MDA	1900/24	479 (500-1/2)	1900/40 479 (500-3/4)	1900/50 479 (500-1)	1900/60 479 (500-1 1/4)
<b>C</b> CIRCLING	1900-1	472 (500-1)	1940-1 1/2 512 (600-1 1/2)	2400-3	972 (1000-3)

TDZ/CL Rwy 9  
REIL Rws 3 and 21  
HIRL Rws 3-21 and 9-27

NC-1, 23 MAY 2019 to 20 JUN 2019

NC-1, 23 MAY 2019 to 20 JUN 2019