

TACAN LKI Chan 11	APCH CRS 087°	Rwy ldg THRE 1428 Arpt Elev 1428
----------------------	------------------	--

JAL-125 [USAF]

DULUTH INTL (KDLH)

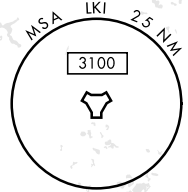
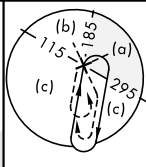
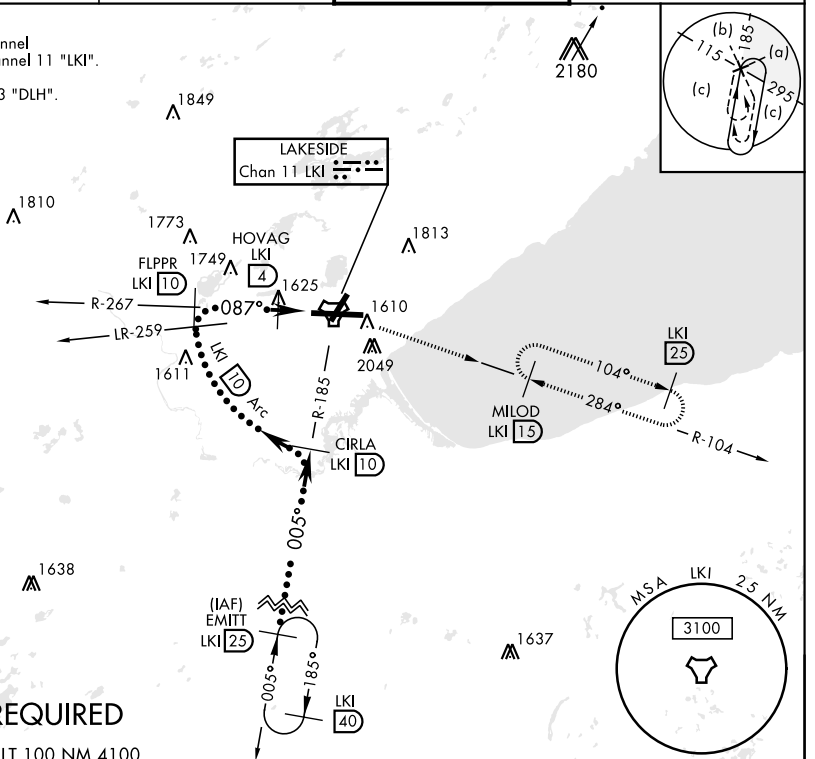
▼ \* When ALS inop, increase CAT E vis to 1 1/2 miles.  
 \*\* Circling NA for CAT E SE of Rwy 3 and 27.



MISSED APPROACH: Climb to 2500 then climbing right turn to 4000 via LKI TACAN R-104 to MILOD (15 DME) and hold.

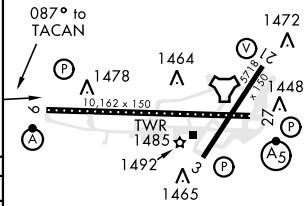
ATIS 124.1 270.1	DULUTH APP CON 125.45 255.9	DULUTH TOWER 118.3 257.8	GND CON 121.9 348.6
---------------------	--------------------------------	-----------------------------	------------------------

CAUTION:  
 Do not select channel 73 "DLH" for channel 11 "LKI".  
 Towers 2049" on R-099 channel 73 "DLH".



**RADAR REQUIRED**  
 EMERG SAFE ALT 100 NM 4100

	2500	4000	MILOD LKI 15	ELEV 1428	THRE 1428	
	FL180	CIRLA R-185	FLPPR R-267	HOVAG 4	IWYYES 27	TACAN
	005°	4000	4000	087°	2300	2.0 NM
	3.00° TCH 50	Arc 10				
CATEGORY	C	D	E			
S-9*	1880/45	452	(500-1)			
CIRCLING**	1920-1 1/2 492 (500-1 1/2)	1980-2 552 (600-2)	2060-2 1/4 632 (700-2 1/4)			



NC-1, 23 MAY 2019 to 20 JUN 2019

NC-1, 23 MAY 2019 to 20 JUN 2019