

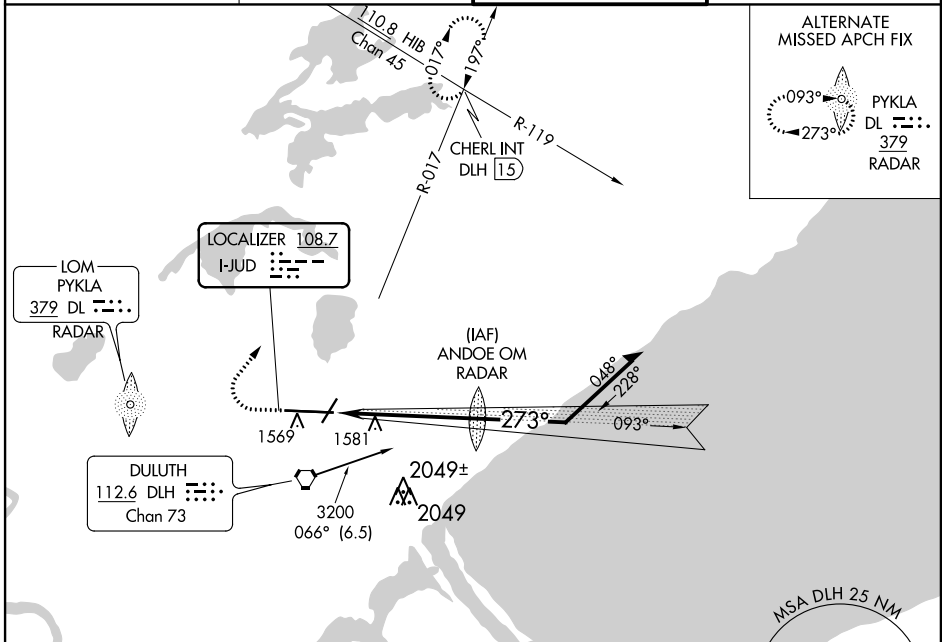
LOC I-JUD 108.7	APP CRS 273°	Rwy ldg 10162 TDZE 1421 Apt Elev 1428
---------------------------	------------------------	--

COPTER ILS or LOC RWY 27

DULUTH INTL (DLH)

ASR Inop table does not apply to H-ILS 27.	MALSR 	MISSED APPROACH: Climb to 3000 then climbing right turn to 4500 on heading 060° and on DLH VORTAC R-017 to CHERL INT/DLH 15 DME and hold.
---	-----------	---

ATIS 124.1 270.1	DULUTH APP CON 125.45 233.7	DULUTH TOWER 118.3 257.8	GND CON 121.9 348.6
----------------------------	---------------------------------------	------------------------------------	-------------------------------



ELEV 1428	D	TDZE 1421
-----------	----------	-----------

Diagram details: 3000, 4500, 3200, 3180, 3200, 3200; hdg 060°, 093°, 273°; DLH R-017, CHERL INT; ANDOE OM RADAR; Remain within 5 NM; VGSI and ILS glidepath not coincident (VGSI Angle 3.00/TCH 96); GS 3.00° TCH 85; 5.2 NM; TDZ/CL Rwy 9; REIL Rwy 3 and 21; HIRL Rwy 3-21 and 9-27; FAF to MAP 5.2 NM; Knots: 45, 60, 75, 90, 105; Min:Sec: 6:57, 5:12, 4:10, 3:28, 2:58.

RADAR REQUIRED	
CATEGORY	COPTER
H-ILS 27	1621/20 200 (200-½)
H-LOC 27	1860/12 439 (500-¼)

NC-1, 23 MAY 2019 to 20 JUN 2019

NC-1, 23 MAY 2019 to 20 JUN 2019