

WAAS CH <b>86715</b> <b>W31A</b>	APP CRS <b>306°</b>	Rwy Idg <b>6432</b> TDZE <b>583</b> Apt Elev <b>590</b>
--	------------------------	---

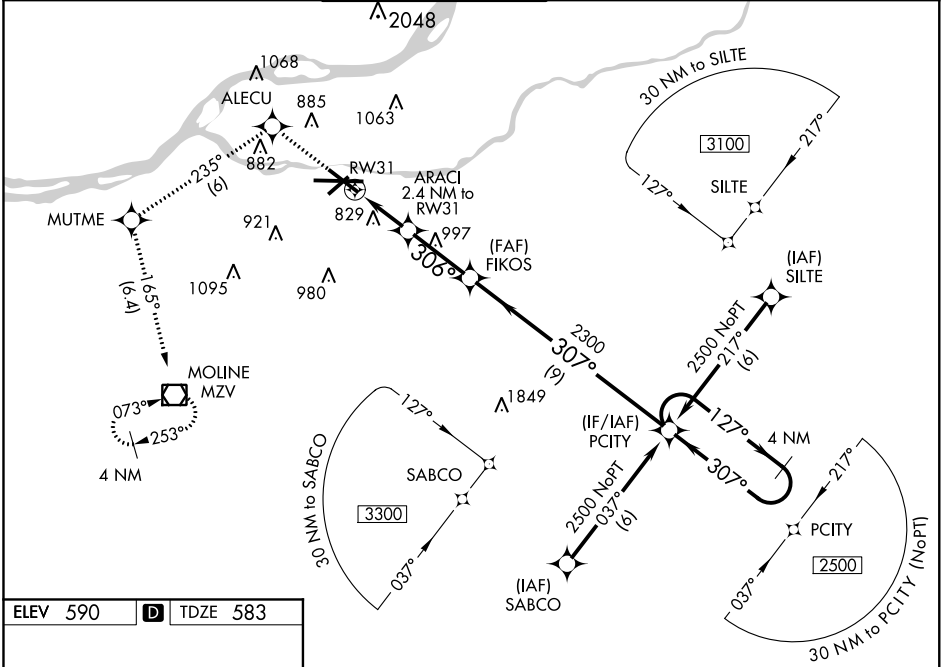
# RNAV (GPS) RWY 31

QUAD CITY INTL (MLI)

**⚠** Circling to Rwy 5 NA at night. For uncompensated Baro-VNAV systems, LNAV/VNAV NA below -16°C (4°F) or above 47°C (116°F). DME/DME RNP-0.3 NA. When local altimeter setting not received, use Davenport altimeter setting and increase LPV DA to 1078 feet and LNAV/VNAV DA to 1207 feet and all MDA 60 feet, increase LPV all Cats, LNAV/VNAV all cats, LNAV Cats C and D, and Circling Cats C and D visibility ¼ SM. Baro-VNAV and VDP NA when using Davenport altimeter setting. Rwy 31 helicopter visibility reduction below ¼ SM NA.

**MISSED APPROACH:** Climb to 3000 direct ALECU and on track 235° to MUTME and on track 165° to MZV VOR/DME and hold.

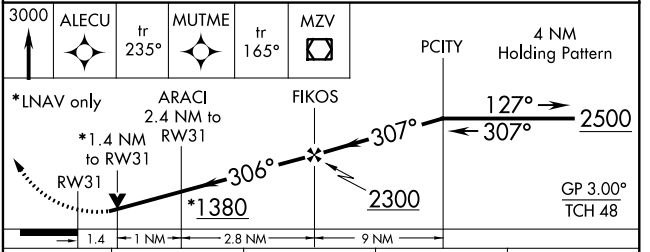
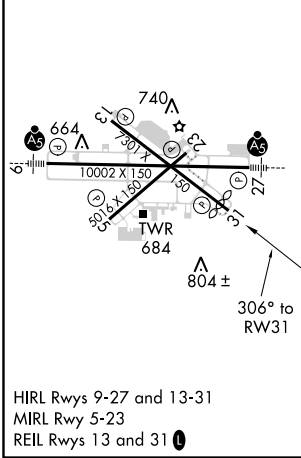
ATIS <b>121.2</b>	QUAD CITY APP CON * <b>125.95 257.8</b>	QUAD CITY TOWER * <b>119.4(CTAF) 269.55</b>	GND CON <b>121.9</b>	CLNC DEL <b>124.05</b>	UNICOM <b>122.95</b>
----------------------	--	--	-------------------------	---------------------------	-------------------------



EC-3: 26 APR 2018 to 24 MAY 2018

EC-3: 26 APR 2018 to 24 MAY 2018

ELEV 590	<b>D</b>	TDZE 583
----------	----------	----------



CATEGORY	A	B	C	D
LPV DA	1031-1½		448 (500-1½)	
LNAV/VNAV DA	1160-2		577 (600-2)	
LNAV MDA	1080-1	497 (500-1)	1080-1¼ 497 (500-1¼)	1080-1½ 497 (500-1½)
CIRCLING	1140-1	550 (600-1)	1140-1½ 550 (600-1½)	1260-2 670 (700-2)