

WAAS CH 86824 W27A	APP CRS 270°	Rwy Idg TDZE 581 Apt Elev 590	10002
--	------------------------	--	--------------

RNAV (GPS) RWY 27

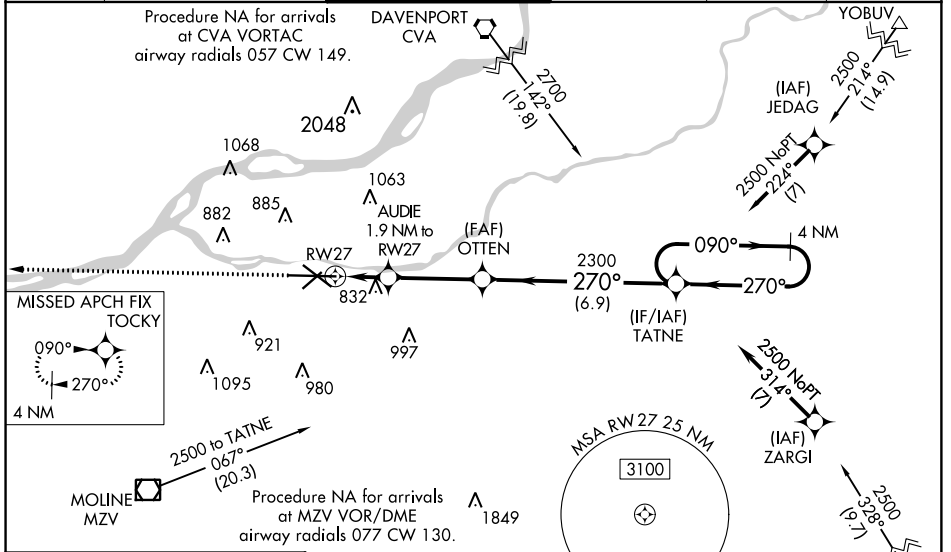
QUAD CITY INTL (MLI)

⚠ Circling to Rwy 5 NA at night. Baro-VNAV NA when using Davenport altimeter setting. For uncompensated Baro-VNAV systems, LNAV/VNAV NA below -26°C (-14°F) or above 40°C (104°F). DME/DME RNP-0.3 NA. When local altimeter setting not received, use Davenport altimeter setting; increase LPV DA to 828 feet and LNAV/VNAV DA to 1233 feet and LNAV/VNAV visibility all Cats 1/2 SM; increase all MDA 60 feet and LNAV visibility Cats C and D 1/2 SM. Circling visibility Cats C and D 1/2 SM. For inoperative ALS, increase LNAV/VNAV visibility all Cats to 2 SM, LNAV visibility Cats C and D to 1 3/8 SM. When using Davenport altimeter setting increase LNAV visibility Cats C and D to 1 3/8 SM.
****RVR 1800 authorized with use of FD or AP or HUD to DA.**

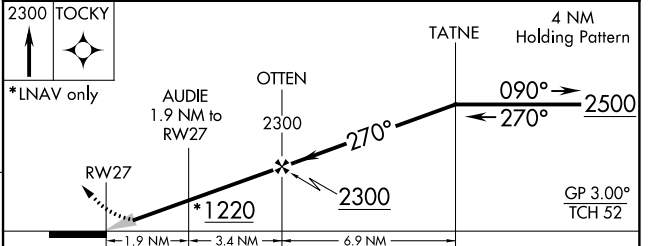
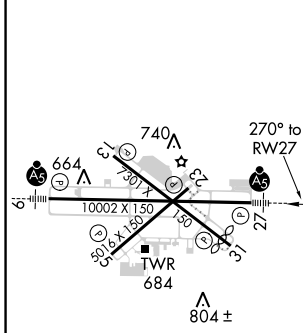
MALSR

MISSED APPROACH:
Climb to 2300 direct TOCKY and hold.

ATIS 121.2	QUAD CITY APP CON * 125.95 257.8	QUAD CITY TOWER * 119.4(CTAF) 269.55	GND CON 121.9	CLNC DEL 124.05	UNICOM 122.95
----------------------	--	--	-------------------------	---------------------------	-------------------------



ELEV 590	D	TDZE 581
----------	----------	----------



CATEGORY	A	B	C	D
LPV DA**	781/24		200 (200-1/2)	
LNAV/VNAV DA	1186-1 3/8		605 (600-1 3/8)	
LNAV MDA	1100/24	519 (600-1/2)	1100/55	519 (600-1 1/4)
CIRCLING	1140-1 550 (600-1)	1160-1 570 (600-1)	1160-1 1/2 570 (600-1 1/2)	1260-2 670 (700-2)

MIRL Rwy 5-23
 REIL Rwy 13 and 31
 HIRL Rwy 9-27 and 13-31

EC-3, 26 APR 2018 to 24 MAY 2018

EC-3, 26 APR 2018 to 24 MAY 2018