

| | | | |
|--|------------------------|-----------------------------|---|
| WAAS CH 42515 W13A | APP CRS 126° | Rwy Idg TDZE Apt Elev | 7032 590 590 |
|--|------------------------|-----------------------------|---|

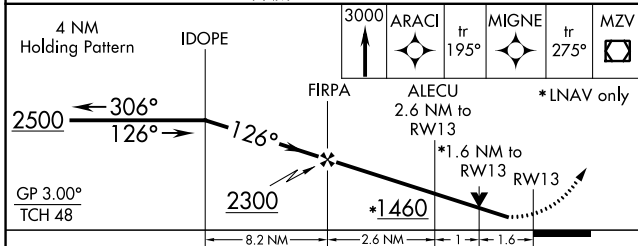
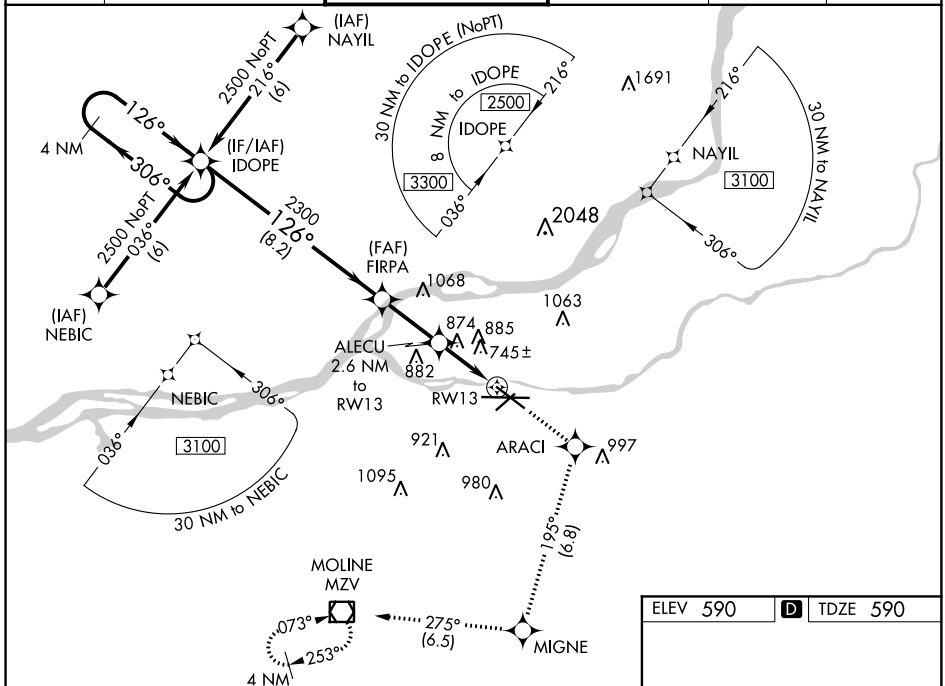
RNAV (GPS) RWY 13

QUAD CITY INTL (MLI)

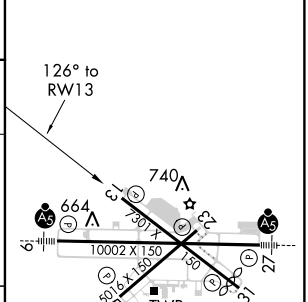
▼ Circling to Rwy 5 NA at night. For uncompensated Baro-VNAV systems, LNAV/VNAV NA below -16°C (4°F) or above 47°C (116°F). DME/DME RNP-0.3 NA. When local altimeter setting not received, use Davenport altimeter setting and increase LPV DA to 955 feet, LNAV/VNAV DA to 1339 feet and all MDA 60 feet; increase LPV all Cats, LNAV/VNAV all Cats, LNAV Cats C and D, and Circling Cats C and D visibility ¼ SM. Rwy 13 helicopter reduction below ¾ SM NA. VDP and Baro-VNAV NA when using Davenport altimeter setting.

MISSED APPROACH: Climb to 3000 direct ARACI and on track 195° to MIGNE and on track 275° to MZV VOR/DME and hold.

| | | | | | |
|----------------------|--|--|-------------------------|---------------------------|-------------------------|
| ATIS 121.2 | QUAD CITY APP CON * 125.95 257.8 | QUAD CITY TOWER * 119.4(CTAF) 0 269.55 | GND CON 121.9 | CLNC DEL 124.05 | UNICOM 122.95 |
|----------------------|--|--|-------------------------|---------------------------|-------------------------|



| | | |
|----------|----------|----------|
| ELEV 590 | D | TDZE 590 |
|----------|----------|----------|



| CATEGORY | A | B | C | D |
|--------------|--------|-------------|-------------------------|-------------------------|
| LPV DA | | 908-1 | 318 (400-1) | |
| LNAV/VNAV DA | | 1292-2½ | 702 (800-2½) | |
| LNAV MDA | 1140-1 | 550 (600-1) | 1140-1½ 550 (600-1½) | 1140-1¾ 550 (600-1¾) |
| CIRCLING | 1140-1 | 550 (600-1) | 1140-1½ 550 (600-1½) | 1260-2 670 (700-2) |

HIRL Rwy 9-27 and 13-31
MIRL Rwy 5-23
REIL Rwy 13 and 31

EC-3, 29 MAR 2018 to 26 APR 2018

EC-3, 29 MAR 2018 to 26 APR 2018