


LOC/DME I-MLI 110.5 Chan 42	APP CRS 090°	Rwy Idg 1000Z TDZE 587 Apt Elev 590
---	------------------------	--

ILS or LOC RWY 9

QUAD CITY INTL (MLI)

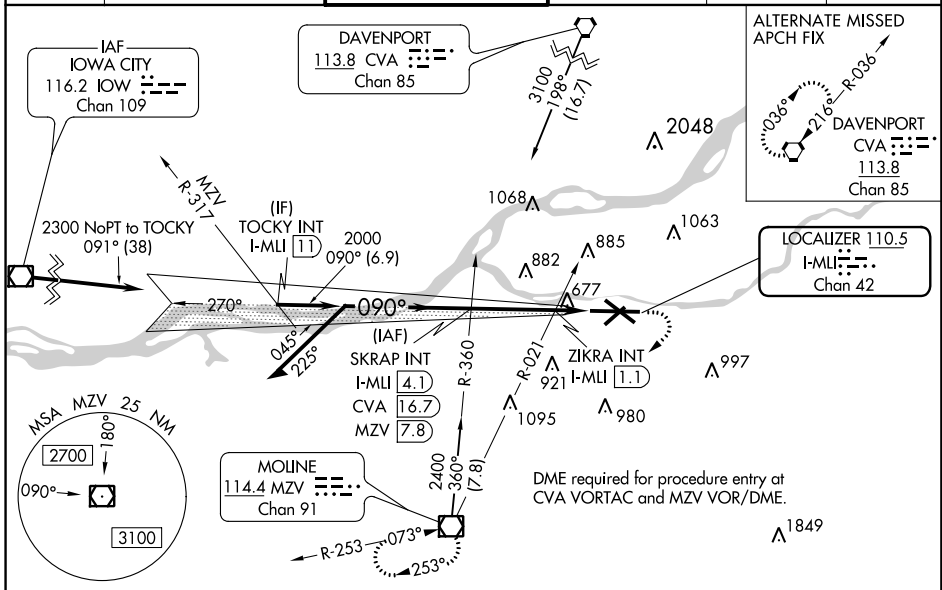
⚠ Circling to Rwy 5 NA at night. When local altimeter setting not received, use Davenport altimeter setting: Increase DA to 825 feet; increase all MDA 60 feet and Circling visibility Cats C and D ¼ SM. For inop ALS, increase S-LOC 9 Cats C and D visibility to 1 ¼ SM. ZIKRA Minimums: For inop ALS, increase S-LOC Cats C and D visibility to 1 SM.
RVR 1800 authorized with use of FD or AP or HUD to DA.

MALSR



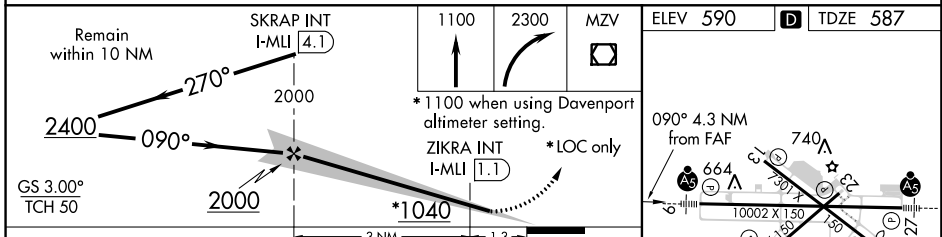
MISSED APPROACH: Climb to 1100 then climbing right turn to 2300 direct MZV VOR/DME and hold.

ATIS 121.2	QUAD CITY APP CON * 125.95 257.8	QUAD CITY TOWER * 119.4(CTAF) 269.55	GND CON 121.9	CLNC DEL 124.05	UNICOM 122.95
----------------------	--	--	-------------------------	---------------------------	-------------------------



EC-3, 29 MAR 2018 to 26 APR 2018

EC-3, 29 MAR 2018 to 26 APR 2018



CATEGORY	A	B	C	D
S-ILS 9 #		787/24	200 (200-½)	
S-LOC 9	1040/24	453 (500-½)	1040/50	453 (500-1)
CIRCLING	1140-1 550 (600-1)	1160-1 570 (600-1)	1160-1½ 570 (600-1½)	1260-2 670 (700-2)
ZIKRA MINIMUMS (Dual VOR receivers or DME required)				
S-LOC 9	940/24	353 (400-½)	940/35	353 (400-¾)
CIRCLING	1140-1 550 (600-1)	1160-1 570 (600-1)	1160-1½ 570 (600-1½)	1260-2 670 (700-2)

ELEV 590 **D** TDZE 587

Remain within 10 NM

GS 3.00° TCH 50

090° 4.3 NM from FAF

MIRL Rwy 5-23
REIL Rws 13 and 31
HIRL Rws 9-27 and 13-31
FAF to MAP 4.3 NM

Knots	60	90	120	150	180
Min:Sec	4:18	2:52	2:09	1:43	1:26