

WAAS CH 61123 W09A	APP CRS 090°	Rwy Idg TDZE 587 Apt Elev 590	10002
--	------------------------	---	--------------

RNAV (GPS) RWY 9

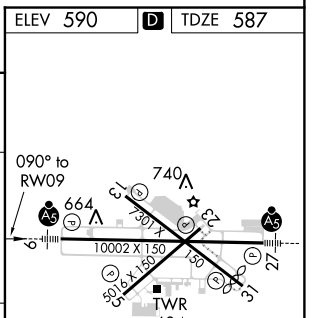
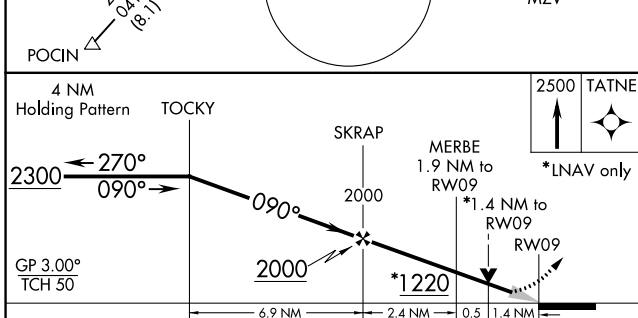
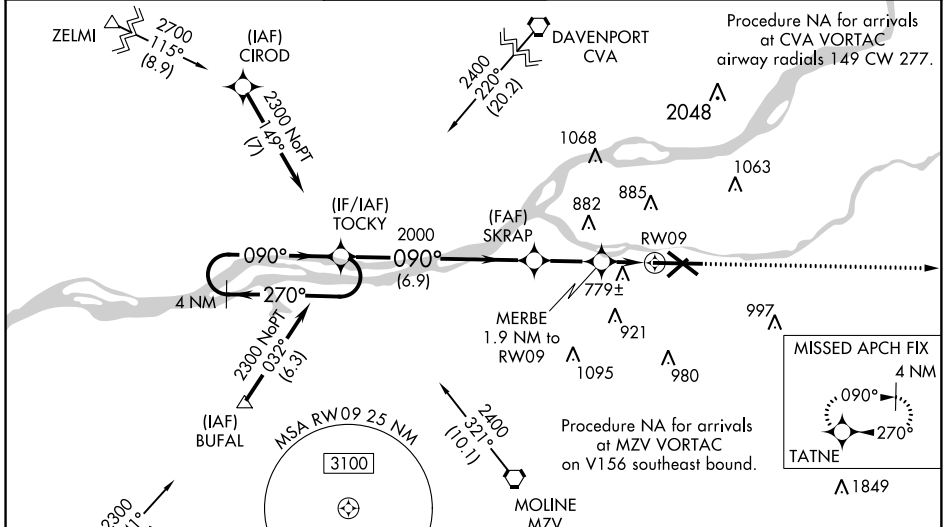
QUAD CITY INTL (MLI)

⚠ Circling to Rwy 05/13/23 NA at night. Baro-VNAV NA when using Davenport altimeter setting. For uncompensated Baro-VNAV systems, LNAV/VNAV NA below -26°C (-14°F) or above 54°C (130°F). DME/DME RNP-0.3 NA. VDP NA when using Davenport altimeter setting. When local altimeter setting not received, use Davenport altimeter setting and increase all DA 47 feet and LNAV/VNAV visibility all Cats ½ mile; increase all MDA 60 feet and visibility, Cats C and D ½ mile, Circling Cats C and D ¼ mile. For inoperative MALSR, increase LNAV visibility all Cats C and D to 1 ½ mile. When using Davenport altimeter increase LNAV/VNAV visibility all Cats to 2 miles, LNAV visibility Cats C and D to 1 ½ mile.
****RVR 1800 authorized with use of FD or AP or HUD to DA, NA when using Davenport altimeter setting.**

MALSR

MISSED APPROACH:
Climb to 2500 direct TATNE and hold.

ATIS 121.2	QUAD CITY APP CON * 125.95 257.8	QUAD CITY TOWER * (CTAF) 0	GND CON 121.9	CLNC DEL 124.05	UNICOM 122.95
----------------------	--	--------------------------------------	-------------------------	---------------------------	-------------------------



CATEGORY	A	B	C	D
LPV DA**	787/24		200 (200-½)	
LNAV/VNAV DA	1122-1 3/8		535 (600-1 3/8)	
LNAV MDA	1060/24	473 (500-½)	1060/50	473 (500-1)
CIRCLING	1140-1 550 (600-1)	1160-1 570 (600-1)	1160-1 ½ 570 (600-1 ½)	1260-2 670 (700-2)

MIRL Rwy 5-23
 REIL Rlys 13 and 31
 HIRL Rlys 9-27 and 13-31

EC-3, 01 MAR 2018 to 29 MAR 2018

EC-3, 01 MAR 2018 to 29 MAR 2018