

LOC/DME I-MLI 110.5 Chan 42	APP CRS 090°	Rwy Idg 1000Z TDZE 587 Apt Elev 590
---	------------------------	--

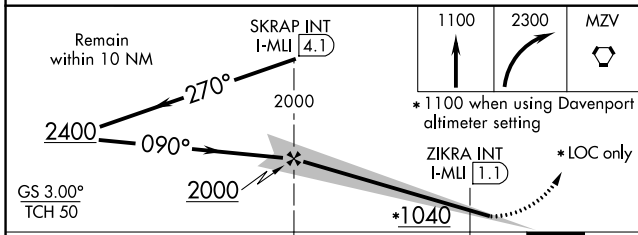
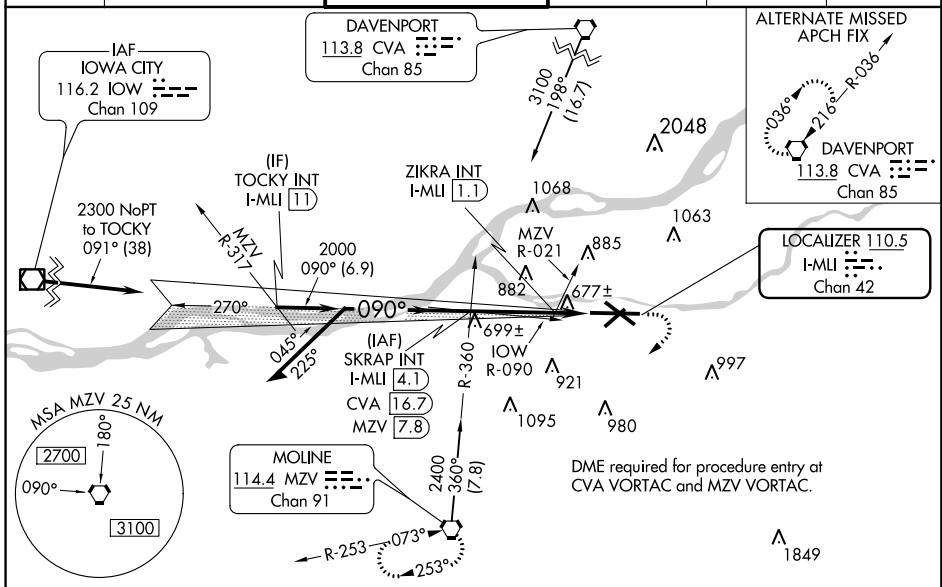
ILS or LOC RWY 9

QUAD CITY INTL (MLI)

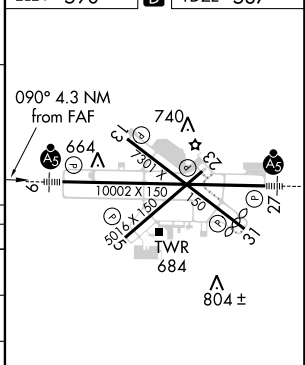
⚠ Circling to Rwy 5 NA at night. When local altimeter setting not received, use Davenport altimeter setting: increase DA to 825 feet, increase all MDA 60 feet, and Circling visibility Cats C and D ¼ mile. For inoperative MALSRS, increase S-LOC 09 Cats C and D visibility to 1 ½ mile. ZIKRA Minimums: For inoperative MALSRS, increase S-LOC Cats C and D visibility to 1 mile.
**** RVR 1800 authorized with use of FD or AP or HUD to DA.**

MALSRS MISSED APPROACH: Climb to 1100 then climbing right turn to 2300 direct MVZ VORTAC and hold.

ATIS 121.2	QUAD CITY APP CON * 125.95 257.8	QUAD CITY TOWER * 119.4(CTAF) 269.55	GND CON 121.9	CLNC DEL 124.05	UNICOM 122.95
----------------------	--	--	-------------------------	---------------------------	-------------------------



ELEV 590	D	TDZE 587
----------	----------	----------



CATEGORY	A	B	C	D
S-ILS 9**	787/24		200 (200-½)	
S-LOC 9	1040/24	453 (500-½)	1040/50	453 (500-1)
CIRCLING	1140-1 550 (600-1)	1160-1 570 (600-1)	1160-1½ 570 (600-1½)	1260-2 670 (700-2)
ZIKRA MINIMUMS (Dual VOR receivers or DME required)				
S-LOC 9	940/24	353 (400-½)	940/35	353 (400-¾)
CIRCLING	1140-1 550 (600-1)	1160-1 570 (600-1)	1160-1½ 570 (600-1½)	1260-2 670 (700-2)

MIRL Rwy 5-23	REIL Rws 13 and 31	HIRL Rws 9-27 and 13-31			
FAF to MAP 4.3 NM					
Knots	60	90	120	150	180
Min:Sec	4:18	2:52	2:09	1:43	1:26

EC-3, 01 FEB 2018 to 01 MAR 2018

EC-3, 01 FEB 2018 to 01 MAR 2018