

LOC/DME I-MLI <b>110.5</b> Chan <b>42</b>	APP CRS <b>090°</b>	Rwy Idg <b>1000Z</b> TDZE <b>587</b> Apt Elev <b>590</b>
---	------------------------	--

# ILS or LOC RWY 9

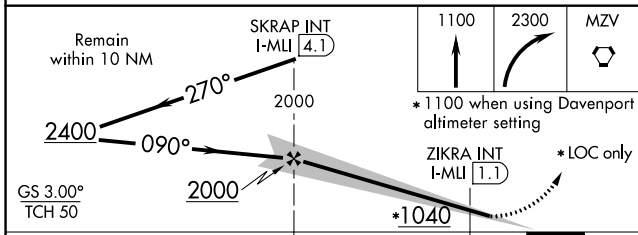
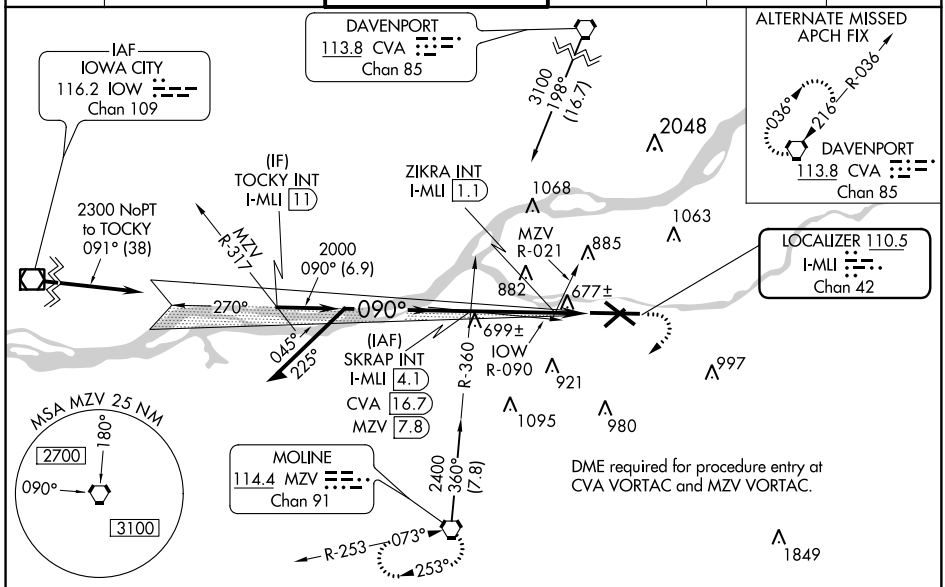
QUAD CITY INTL (MLI)

**⚠** Circling to Rwy 5 NA at night. When local altimeter setting not received, use Davenport altimeter setting: increase DA to 825 feet, increase all MDA 60 feet, and Circling visibility Cats C and D ¼ mile. For inoperative MALS, increase S-LOC 09 Cats C and D visibility to 1 ½ mile. ZIKRA Minimums: For inoperative MALS, increase S-LOC Cats C and D visibility to 1 mile.  
**\*\* RVR 1800 authorized with use of FD or AP or HUD to DA.**

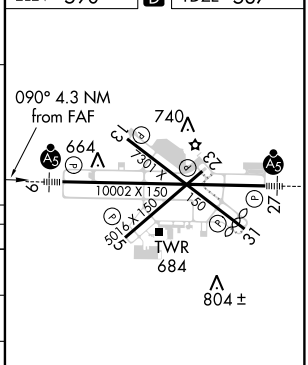
**MALS**

**MISSED APPROACH:**  
Climb to 1100 then climbing right turn to 2300 direct MVZ VORTAC and hold.

ATIS <b>121.2</b>	QUAD CITY APP CON * <b>125.95 257.8</b>	QUAD CITY TOWER * <b>119.4(CTAF) 269.55</b>	GND CON <b>121.9</b>	CLNC DEL <b>124.05</b>	UNICOM <b>122.95</b>
----------------------	--	--	-------------------------	---------------------------	-------------------------



ELEV 590	<b>D</b>	TDZE 587
----------	----------	----------



CATEGORY	A	B	C	D
S-ILS 9**	787/24		200 (200-½)	
S-LOC 9	1040/24	453 (500-½)	1040/50	453 (500-1)
CIRCLING	1140-1 550 (600-1)	1160-1 570 (600-1)	1160-1½ 570 (600-1½)	1260-2 670 (700-2)
ZIKRA MINIMUMS (Dual VOR receivers or DME required)				
S-LOC 9	940/24	353 (400-½)	940/35	353 (400-¾)
CIRCLING	1140-1 550 (600-1)	1160-1 570 (600-1)	1160-1½ 570 (600-1½)	1260-2 670 (700-2)

MIRL Rwy 5-23  
 REIL Rws 13 and 31  
 HIRL Rws 9-27 and 13-31  
 FAF to MAP 4.3 NM

Knots	60	90	120	150	180
Min:Sec	4:18	2:52	2:09	1:43	1:26

EC-3: 07 DEC 2017 to 04 JAN 2018

EC-3: 07 DEC 2017 to 04 JAN 2018