

|  |                        |                             |  |
|--|------------------------|-----------------------------|--|
| WAAS<br>CH <b>61123</b><br><b>W09A</b> | APP CRS<br><b>090°</b> | Rwy Idg<br>TDZE<br>Apt Elev | <b>10002</b><br><b>587</b><br><b>590</b> |
|--|------------------------|-----------------------------|--|

# RNAV (GPS) RWY 9

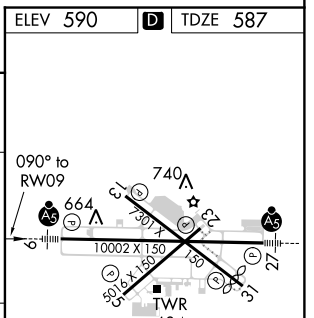
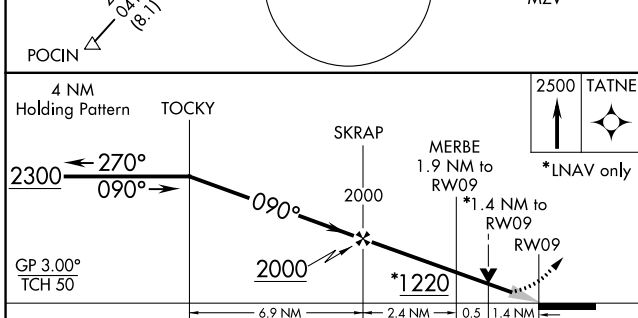
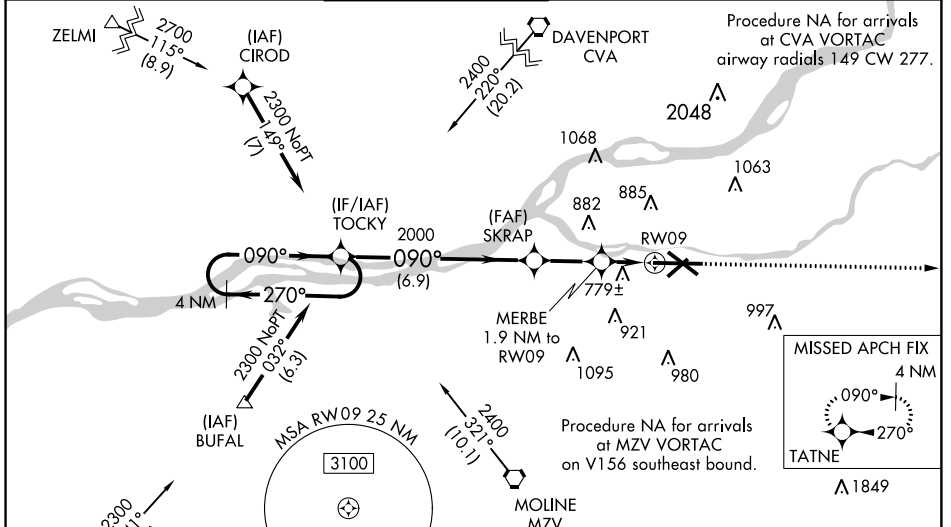
QUAD CITY INTL (MLI)

⚠ Circling to Rwy 05/13/23 NA at night. Baro-VNAV NA when using Davenport altimeter setting. For uncompensated Baro-VNAV systems, LNAV/VNAV NA below -26°C (-14°F) or above 54°C (130°F). DME/DME RNP-0.3 NA. VDP NA when using Davenport altimeter setting. When local altimeter setting not received, use Davenport altimeter setting and increase all DA 47 feet and LNAV/VNAV visibility all Cats ½ mile; increase all MDA 60 feet and visibility, Cats C and D ½ mile, Circling Cats C and D ¼ mile. For inoperative MALSR, increase LNAV visibility Cats C and D to 1 ½ mile. When using Davenport altimeter increase LNAV/VNAV visibility all Cats to 2 miles, LNAV visibility Cats C and D to 1 ½ mile.

MALSR

MISSED APPROACH:  
Climb to 2500 direct TATNE and hold.

|                      |  |                                      |                         |                           |                         |
|----------------------|--|--------------------------------------|-------------------------|---------------------------|-------------------------|
| ATIS<br><b>121.2</b> | QUAD CITY APP CON ★<br><b>125.95 257.8</b> | QUAD CITY TOWER ★<br>(CTAF) <b>0</b> | GND CON<br><b>121.9</b> | CLNC DEL<br><b>124.05</b> | UNICOM<br><b>122.95</b> |
|----------------------|--|--------------------------------------|-------------------------|---------------------------|-------------------------|



| CATEGORY     | A                     | B                     | C                             | D                     |
|--------------|-----------------------|-----------------------|-------------------------------|-----------------------|
| LPV DA       | 787/24                |                       | 200 (200-½)                   |                       |
| LNAV/VNAV DA | 1122-1 3/8            |                       | 535 (600-1 3/8)               |                       |
| LNAV MDA     | 1060/24               | 473 (500-½)           | 1060/50                       | 473 (500-1)           |
| CIRCLING     | 1140-1<br>550 (600-1) | 1160-1<br>570 (600-1) | 1160-1 1/2<br>570 (600-1 1/2) | 1260-2<br>670 (700-2) |

ELEV 590 **D** TDZE 587

MIRL Rwy 5-23  
REIL Rws 13 and 31  
HIRL Rws 9-27 and 13-31

EC-3, 12 OCT 2017 to 09 NOV 2017

EC-3, 12 OCT 2017 to 09 NOV 2017