


WAAS CH 86824 W27A	APP CRS 270°	Rwy Idg TDZE 581 Apt Elev 590	10002
--	------------------------	---	--------------

RNAV (GPS) RWY 27

QUAD CITY INTL (MLI)

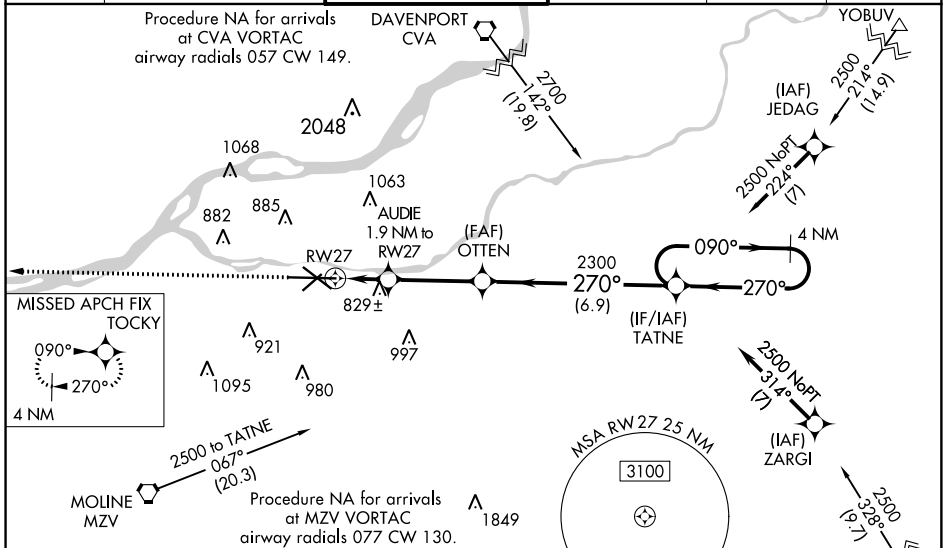
⚠ Circling to Rwy 05/13/23 NA at night. Baro-VNAV NA when using Davenport altimeter setting. For uncompensated Baro-VNAV systems, LNAV/VNAV NA below -26°C (-14°F) or above 54°C (130°F). DME/DME RNP-0.3 NA. When local altimeter setting not received, use Davenport altimeter setting: increase all DA 47 feet and LNAV/VNAV visibility all Cats ½ mile; increase all MDA 60 feet and visibility, Cats C and D ¼ mile, Circling visibility Cats C and D ¼ mile. For inoperative MALSR, increase LNAV/VNAV visibility all Cats to 2 miles, LNAV visibility Cats C and D to 1½ mile. When using Davenport altimeter increase LNAV visibility Cats C and D to 1½ mile.

MALSR

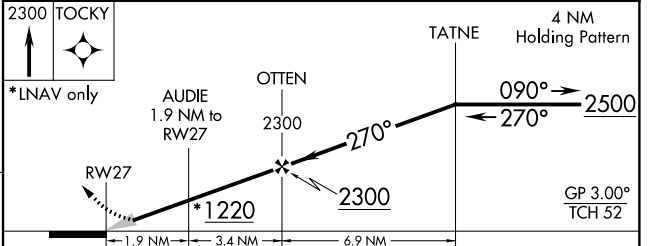
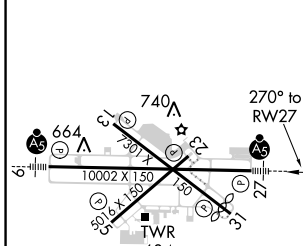


MISSED APPROACH:
Climb to 2300 direct
TOCKY and hold.

ATIS 121.2	QUAD CITY APP CON * 125.95 257.8	QUAD CITY TOWER * 119.4(CTAF) 269.55	GND CON 121.9	CLNC DEL 124.05	UNICOM 122.95
----------------------	--	--	-------------------------	---------------------------	-------------------------



ELEV 590	D	TDZE 581
----------	----------	----------



	A	B	C	D
CATEGORY	A	B	C	D
LPV DA		781/24	200 (200-½)	
LNAV/VNAV DA		1186-1½	605 (600-1½)	
LNAV MDA	1080/24	499 (500-½)	1080/55	499 (500-1¼)
CIRCLING	1140-1 550 (600-1)	1160-1 570 (600-1)	1160-1½ 570 (600-1½)	1260-2 670 (700-2)

MIRL Rwy 5-23
REIL Rwy 13 and 31
HIRL Rwy 9-27 and 13-31

EC-3, 12 OCT 2017 to 09 NOV 2017

EC-3, 12 OCT 2017 to 09 NOV 2017