

| | | |
|---|------------------------|--|
| LOC/DME I-MLI 110.5 Chan 42 | APP CRS 090° | Rwy Idg 1000Z TDZE 587 Apt Elev 590 |
|---|------------------------|--|

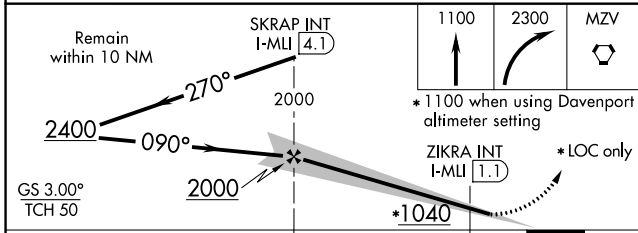
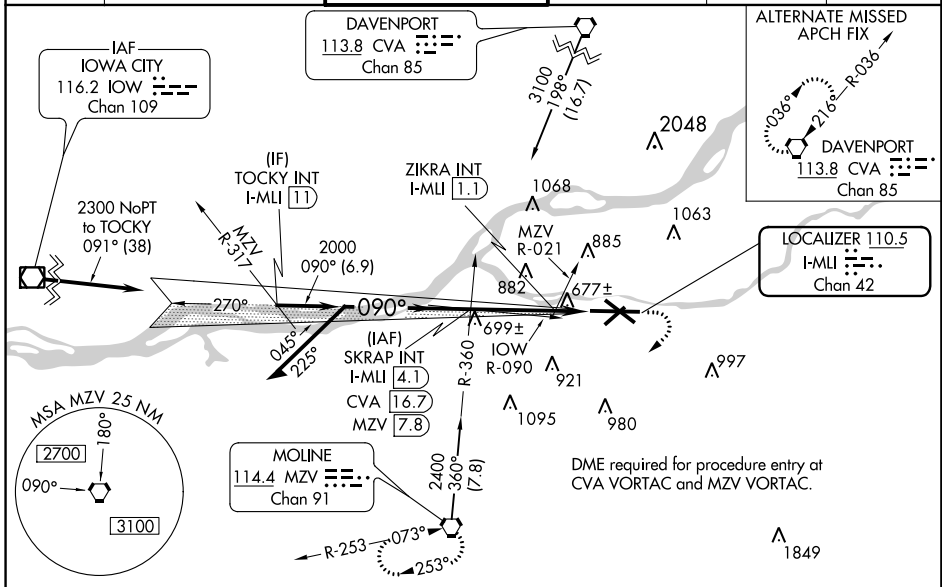
ILS or LOC RWY 9

QUAD CITY INTL (MLI)

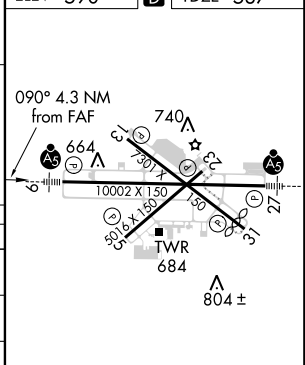
⚠ Circling to Rwy 5 NA at night. When local altimeter setting not received, use Davenport altimeter setting: increase DA to 825 feet, increase all MDA 60 feet, and Circling visibility Cats C and D ¼ mile. For inoperative MALSRS, increase S-LOC 09 Cats C and D visibility to 1 ½ mile. ZIKRA Minimums: For inoperative MALSRS, increase S-LOC Cats C and D visibility to 1 mile.
**** RVR 1800 authorized with use of FD or AP or HUD to DA.**

MALSRS MISSED APPROACH: Climb to 1100 then climbing right turn to 2300 direct MVZ VORTAC and hold.

| | | | | | |
|----------------------|--|--|-------------------------|---------------------------|-------------------------|
| ATIS 121.2 | QUAD CITY APP CON * 125.95 257.8 | QUAD CITY TOWER * 119.4(CTAF) 269.55 | GND CON 121.9 | CLNC DEL 124.05 | UNICOM 122.95 |
|----------------------|--|--|-------------------------|---------------------------|-------------------------|



| | | |
|----------|----------|----------|
| ELEV 590 | D | TDZE 587 |
|----------|----------|----------|



| CATEGORY | A | B | C | D |
|---|-----------------------|-----------------------|-------------------------|-----------------------|
| S-ILS 9** | 787/24 | | 200 (200-½) | |
| S-LOC 9 | 1040/24 | 453 (500-½) | 1040/50 | 453 (500-1) |
| CIRCLING | 1140-1 550 (600-1) | 1160-1 570 (600-1) | 1160-1½ 570 (600-1½) | 1260-2 670 (700-2) |
| ZIKRA MINIMUMS (Dual VOR receivers or DME required) | | | | |
| S-LOC 9 | 940/24 | 353 (400-½) | 940/35 | 353 (400-¾) |
| CIRCLING | 1140-1 550 (600-1) | 1160-1 570 (600-1) | 1160-1½ 570 (600-1½) | 1260-2 670 (700-2) |

MIRL Rwy 5-23
 REIL Rws 13 and 31
 HIRL Rws 9-27 and 13-31
 FAF to MAP 4.3 NM

| | | | | | |
|---------|------|------|------|------|------|
| Knots | 60 | 90 | 120 | 150 | 180 |
| Min:Sec | 4:18 | 2:52 | 2:09 | 1:43 | 1:26 |

EC-3, 12 OCT 2017 to 09 NOV 2017

EC-3, 12 OCT 2017 to 09 NOV 2017