

WAAS CH 61123 W09A	APP CRS 090°	Rwy Idg TDZE Apt Elev	10002 587 590
--	------------------------	-----------------------------	--

RNAV (GPS) RWY 9

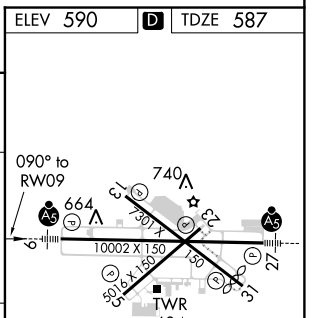
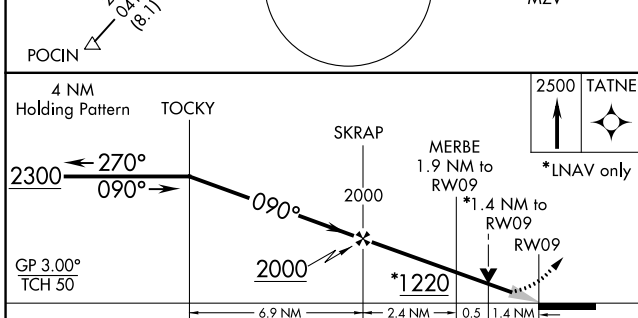
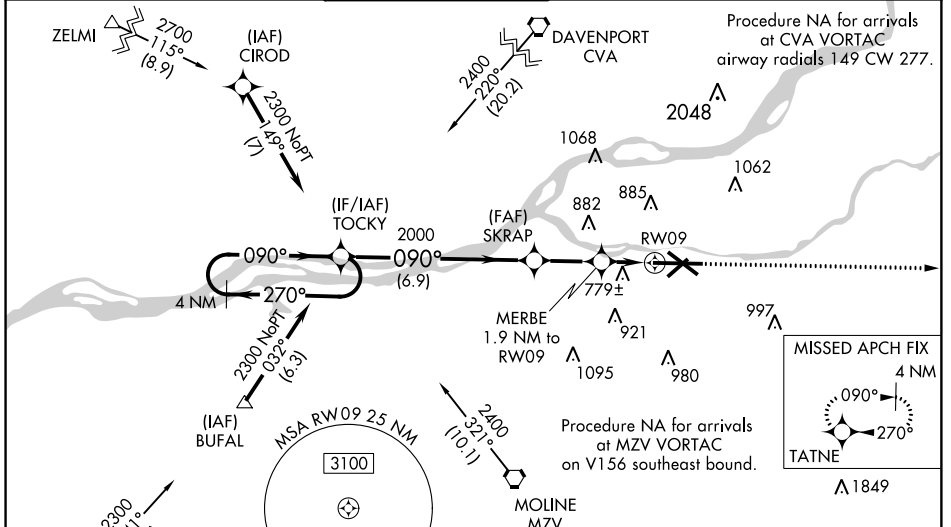
QUAD CITY INTL (MLI)

⚠ Circling to Rwy 05/13/23 NA at night. Baro-VNAV NA when using Davenport altimeter setting. For uncompensated Baro-VNAV systems, LNAV/VNAV NA below -26°C (-14°F) or above 54°C (130°F). DME/DME RNP-0.3 NA. VDP NA when using Davenport altimeter setting. When local altimeter setting not received, use Davenport altimeter setting and increase all DA 47 feet and LNAV/VNAV visibility all Cats ½ mile; increase all MDA 60 feet and visibility, Cats C and D ½ mile, Circling Cats C and D ¼ mile. For inoperative MALSR, increase LNAV visibility Cats C and D to 1 ½ mile. When using Davenport altimeter increase LNAV/VNAV visibility all Cats to 2 miles, LNAV visibility Cats C and D to 1 ½ mile.

MALSR

MISSED APPROACH:
Climb to 2500 direct TATNE and hold.

ATIS 121.2	QUAD CITY APP CON ★ 125.95 257.8	QUAD CITY TOWER ★ (CTAF) 0	GND CON 121.9 257.8	CLNC DEL 124.05	UNICOM 122.95
----------------------	--	--------------------------------------	-------------------------------	---------------------------	-------------------------



CATEGORY	A	B	C	D
LPV DA	787/24		200 (200-½)	
LNAV/VNAV DA	1122-1 3/8		535 (600-1 3/8)	
LNAV MDA	1060/24	473 (500-½)	1060/50	473 (500-1)
CIRCLING	1140-1 550 (600-1)	1160-1 570 (600-1)	1160-1 ½ 570 (600-1 ½)	1260-2 670 (700-2)

ELEV 590 [D] TDZE 587

MIRL Rwy 5-23
REIL Rws 13 and 31
HIRL Rws 9-27 and 13-31

EC-3, 27 APR 2017 to 25 MAY 2017

EC-3, 27 APR 2017 to 25 MAY 2017