

WAAS CH <b>86824</b> <b>W27A</b>	APP CRS <b>270°</b>	Rwy Idg TDZE <b>581</b> Apt Elev <b>590</b>	<b>10002</b>
--	------------------------	---	--------------

# RNAV (GPS) RWY 27

QUAD CITY INTL (MLI)

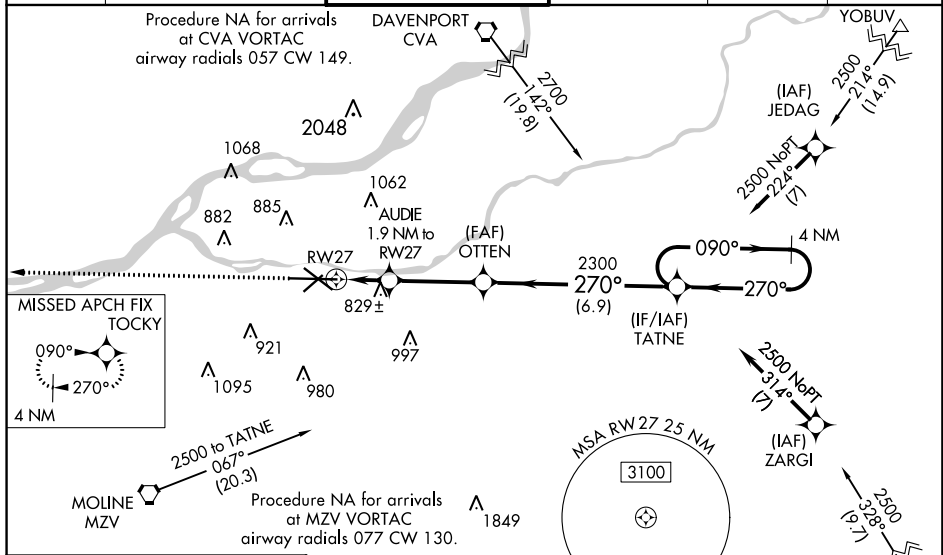
**⚠** Circling to Rwy 05/13/23 NA at night. Baro-VNAV NA when using Davenport altimeter setting. For uncompensated Baro-VNAV systems, LNAV/VNAV NA below -26°C (-14°F) or above 54°C (130°F). DME/DME RNP-0.3 NA. When local altimeter setting not received, use Davenport altimeter setting: increase all DA 47 feet and LNAV/VNAV visibility all Cats ½ mile; increase all MDA 60 feet and visibility, Cats C and D ¼ mile, Circling visibility Cats C and D ¼ mile. For inoperative MALSR, increase LNAV/VNAV visibility all Cats to 2 miles, LNAV visibility Cats C and D to 1½ mile. When using Davenport altimeter increase LNAV visibility Cats C and D to 1½ mile.

MALSR

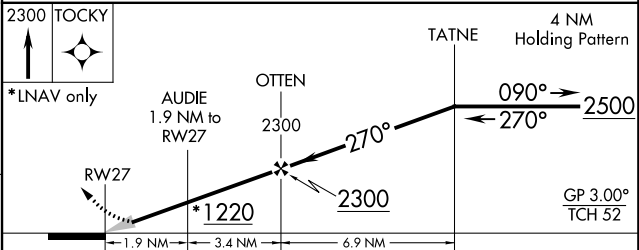
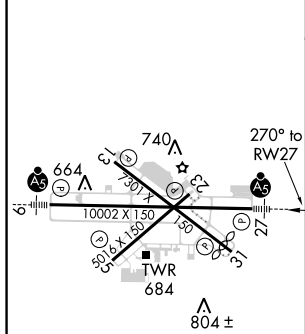


MISSED APPROACH:  
Climb to 2300 direct  
TOCKY and hold.

ATIS <b>121.2</b>	QUAD CITY APP CON * <b>125.95 257.8</b>	QUAD CITY TOWER * <b>119.4(CTAF) 269.55</b>	GND CON <b>121.9 257.8</b>	CLNC DEL <b>124.05</b>	UNICOM <b>122.95</b>
----------------------	--	--	-------------------------------	---------------------------	-------------------------



ELEV 590	<b>D</b>	TDZE 581
----------	----------	----------



CATEGORY	A	B	C	D
LPV DA		781/24	200 (200-½)	
LNAV/VNAV DA		1186-1½	605 (600-1½)	
LNAV MDA	1080/24	499 (500-½)	1080/55	499 (500-1¼)
CIRCLING	1140-1 550 (600-1)	1160-1 570 (600-1)	1160-1½ 570 (600-1½)	1260-2 670 (700-2)

MIRL Rwy 5-23  
REIL Rwy 13 and 31  
HIRL Rwy 9-27 and 13-31

MOLINE, ILLINOIS  
Amdt 1B 28MAY15

41°27'N-90°30'W

# QUAD CITY INTL (MLI) RNAV (GPS) RWY 27

EC-3, 27 APR 2017 to 25 MAY 2017

EC-3, 27 APR 2017 to 25 MAY 2017