

WAAS CH <b>42515</b> <b>W13A</b>	APP CRS <b>126°</b>	Rwy Idg TDZE Apt Elev	<b>7046</b> <b>590</b> <b>590</b>
--	------------------------	-----------------------------	---

# RNAV (GPS) RWY 13

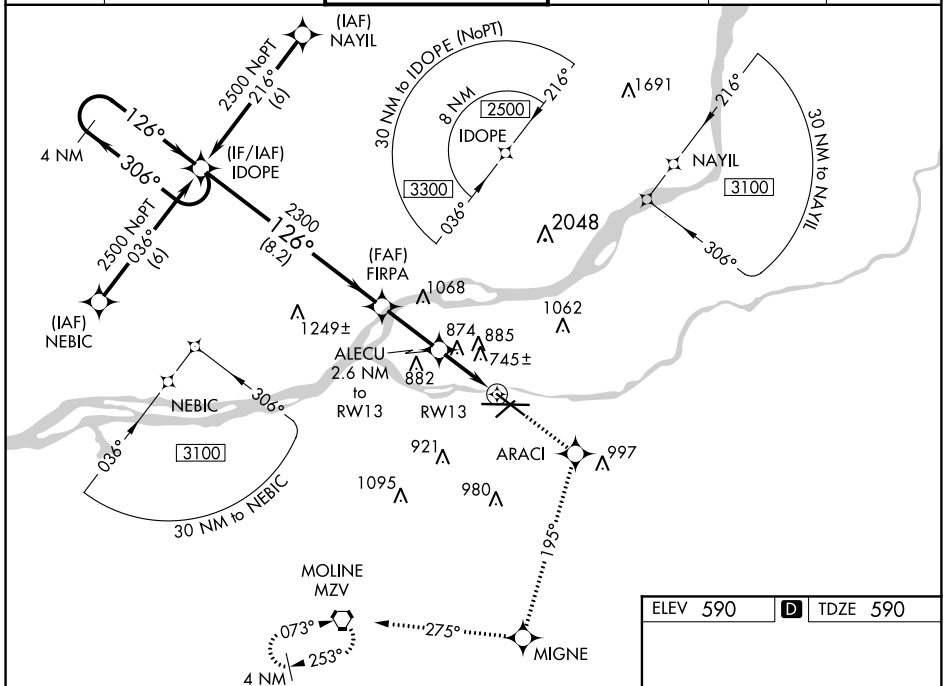
QUAD CITY INTL (MLI)

**▼** Baro-VNAV NA when using Davenport altimeter setting. For uncompensated Baro-VNAV systems, LNAV/VNAV NA below -26°C (-14°F) or above 54°C (130°F). DME/DME RNP-0.3 NA.

**▲** Helicopter visibility reduction below ¾ SM NA. When local altimeter setting not received, use Davenport altimeter setting and increase all DA 47 feet and all MDA 60 feet increase LPV all Cats, LNAV/VNAV all Cats, LNAV Cats C and D, and Circling Cats C and D visibility ¼ mile. Night landing: Rwy 5 NA.

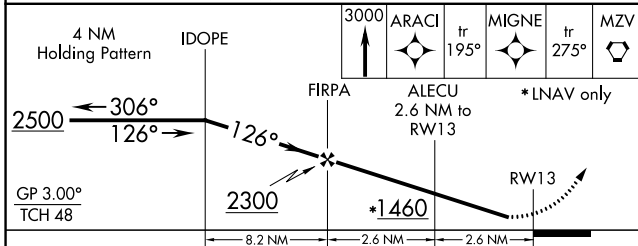
**MISSED APPROACH:** Climb to 3000 direct ARACI and via track 195° to MIGNE and via track 275° to MZV VORTAC and hold.

ATIS <b>121.2</b>	QUAD CITY APP CON * <b>125.95 257.8</b>	QUAD CITY TOWER * <b>119.4(CTAF) 269.55</b>	GND CON <b>121.9 257.8</b>	CLNC DEL <b>124.05</b>	UNICOM <b>122.95</b>
----------------------	--	--	-------------------------------	---------------------------	-------------------------



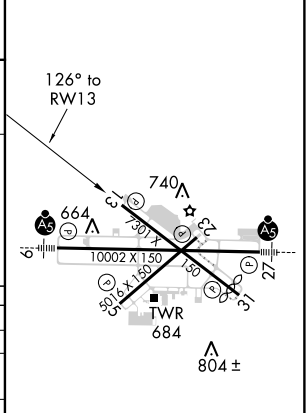
EC-3, 27 APR 2017 to 25 MAY 2017

EC-3, 27 APR 2017 to 25 MAY 2017



ELEV 590	<b>D</b> TDZE 590
----------	-------------------

CATEGORY	A	B	C	D
LPV DA		908-1	318 (400-1)	
LNAV/VNAV DA		1292-2½	702 (800-2½)	
LNAV MDA	1140-1	550 (600-1)	1140-1½ 550 (600-1½)	1140-1¾ 550 (600-1¾)
CIRCLING	1140-1	550 (600-1)	1140-1½ 550 (600-1½)	1260-2 670 (700-2)



HIRL Rwy 9-27 and 13-31  
MIRL Rwy 5-23  
REIL Rwy 13 and 31